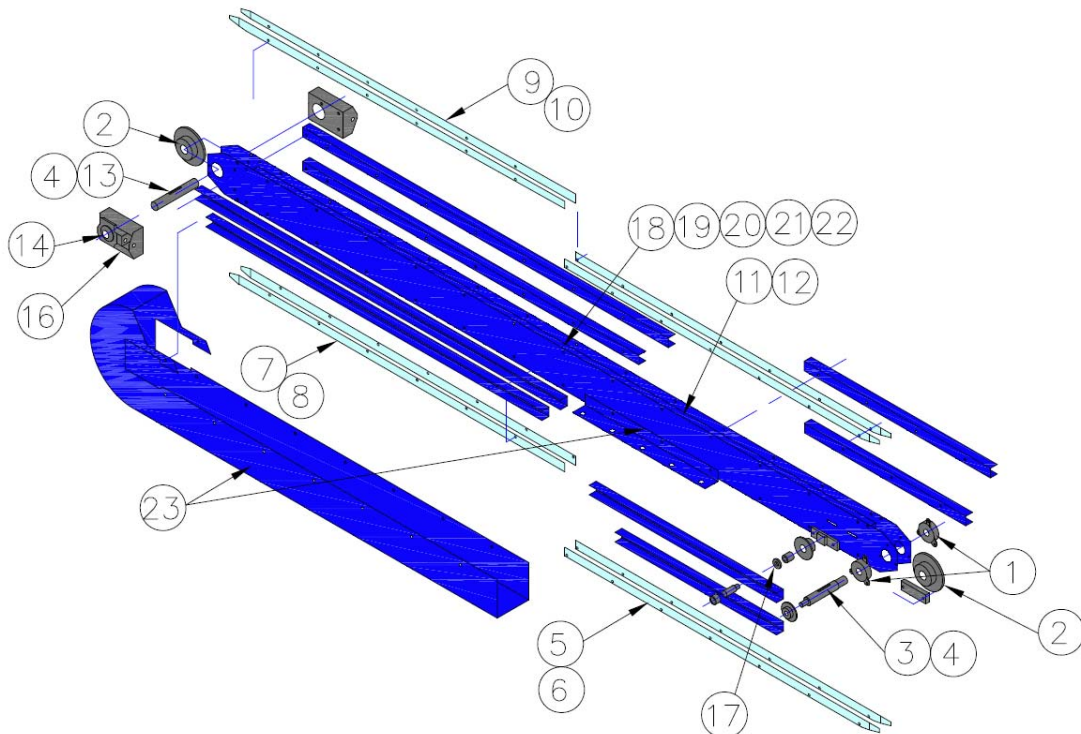


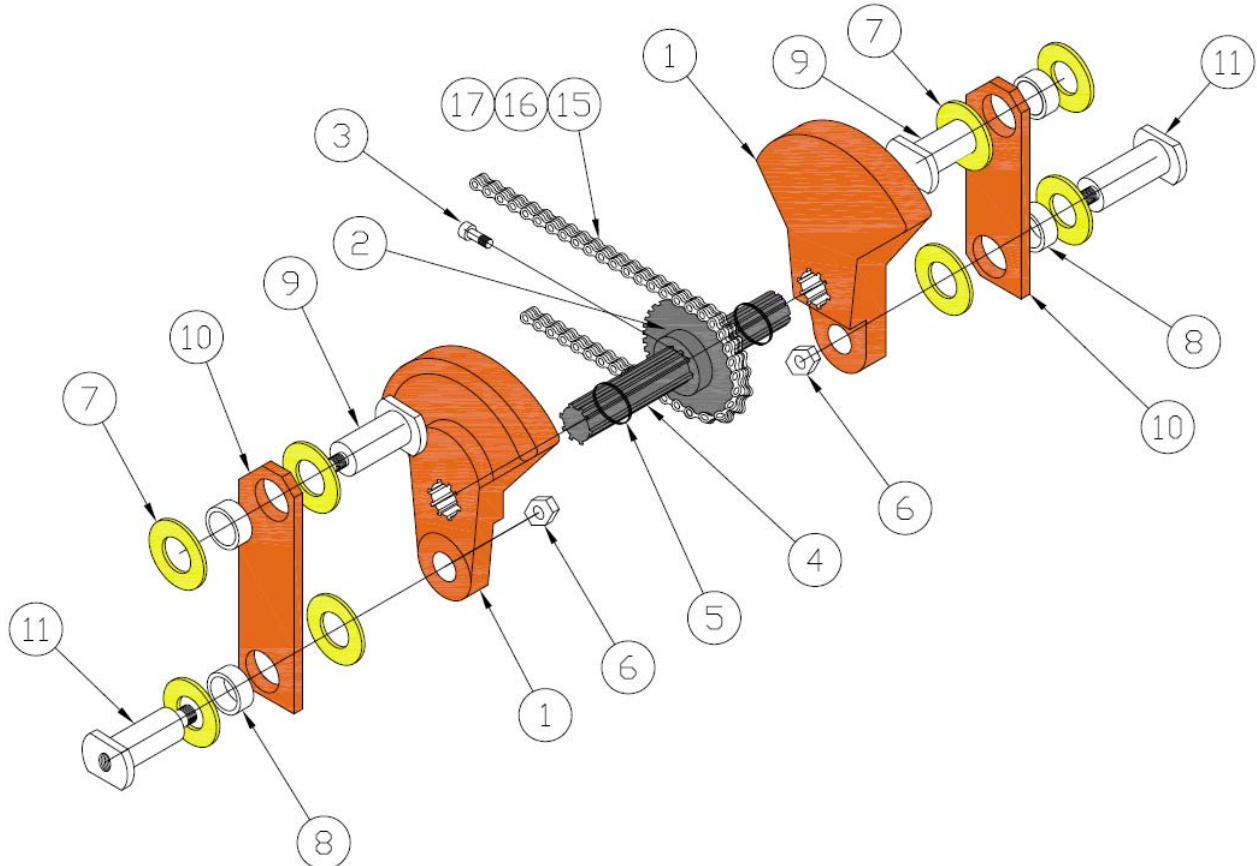
Trimmer Conveyor Frame / Model 10039 - 10041

Item	Adrian	OEM	Description	Qty.
1	295521	670063	Flange Bearing	2
2	472197	846374	Sprocket, Tapered w/ 1.25 Bore	2
3	472660	846119	Drive Shaft	1
4	795573	470042	Spirolox, Snap Ring	4
5	654927	108764	Rail, Exit End Opposite (10039 or 10040)	2
6	652443	106882	Rail, Exit End (10039 or 10040)	2
7	654923	108762	Rail, Load End Opposite (10039 only)	2
8	652494	106878	Rail, Load End (10039 only)	2
9	654921	108763	Rail, Load End Opposite (10040 only)	2
10	652445	106880	Rail, Load End (10040 only)	2
11	765332	410226	Roller Chain (10039) (Not Shown)	20'
12	765532	410026	Roller Chain (10040) (Not Shown)	24'
13	472688	846155	Idler Shaft	1
14	295554	670008	Take-up Bearing	2
15	345518	280035	Rail Keeper (T-Nut) (Not Shown)	60
16	413344	832288	Take-up Frame	2
17	430554	829008	Idler Stud	1
18	472673	846142	Bucket Carrier, 8" OC / Gallon (Not Shown)	TBD
19	91422	*****	Gallon Bucket, Urethane (Not Shown)	TBD
20	472673	846142	Bucket Carrier, 6" OC / Half-Gallon (Not Shown)	TBD
21	91306	*****	Half Gallon Bucket, Urethane (Not Shown)	TBD
22	158666	305111	Roll Pin (2 per Carrier) (Not Shown)	TBD
23	TBD	*****	Load Beam and Lower Guard (based on Model)	TBD



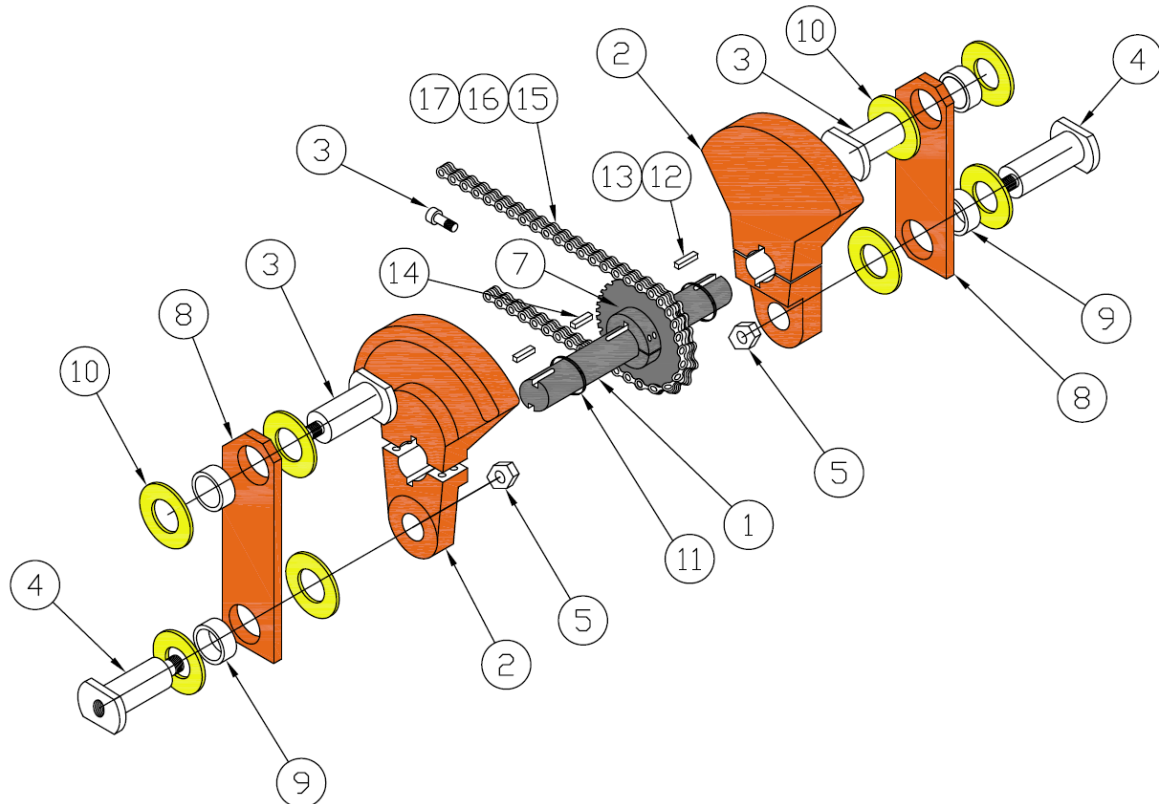
Trimmer Platen Drive Assembly with Spline Shaft - Models 10039 - 10041

Item	Adrian	OEM	Description	Qty.
1	413304	832298	Crank Counter Weights (Matched Set)	1
2	430765	829410	Driven Sprocket, D50	1
3	360552	219006	1/4 – 20 x 3/4 Socket Set Screw	1
4	472616	846131	Crank Shaft	1
5	795571	470043	Snap Ring	2
6	138515	325030	3/4 – 16 Jam Nut	2
7	275516	640031	Thrust Washer	8
8	268530	615029	Bearing	4
9	430678	829415	Link Pin	2
10	413308	832295	Link	2
11	430565	829010	Crank Pin	2
12	765564	410018	Drive Sprocket, D50P21 (Not Shown)	1
13	90512	*****	Bushing, P1 x 1.25" (Not Shown)	1
14	785557	450004	Idler Sprocket, D50B17	1
15	765692	410176	Roller Chain, 50-2	1
16	765610	410139	Master Link, 50-2	1
17	765675	410140	Offset Link, 50-2	1
18	90166	*****	Hub, 1.50" (for Ferguson Gearbox) (Not Shown)	1
19	90167	*****	Hub, 1.25" (for Geneva Gearbox) (Not Shown)	1



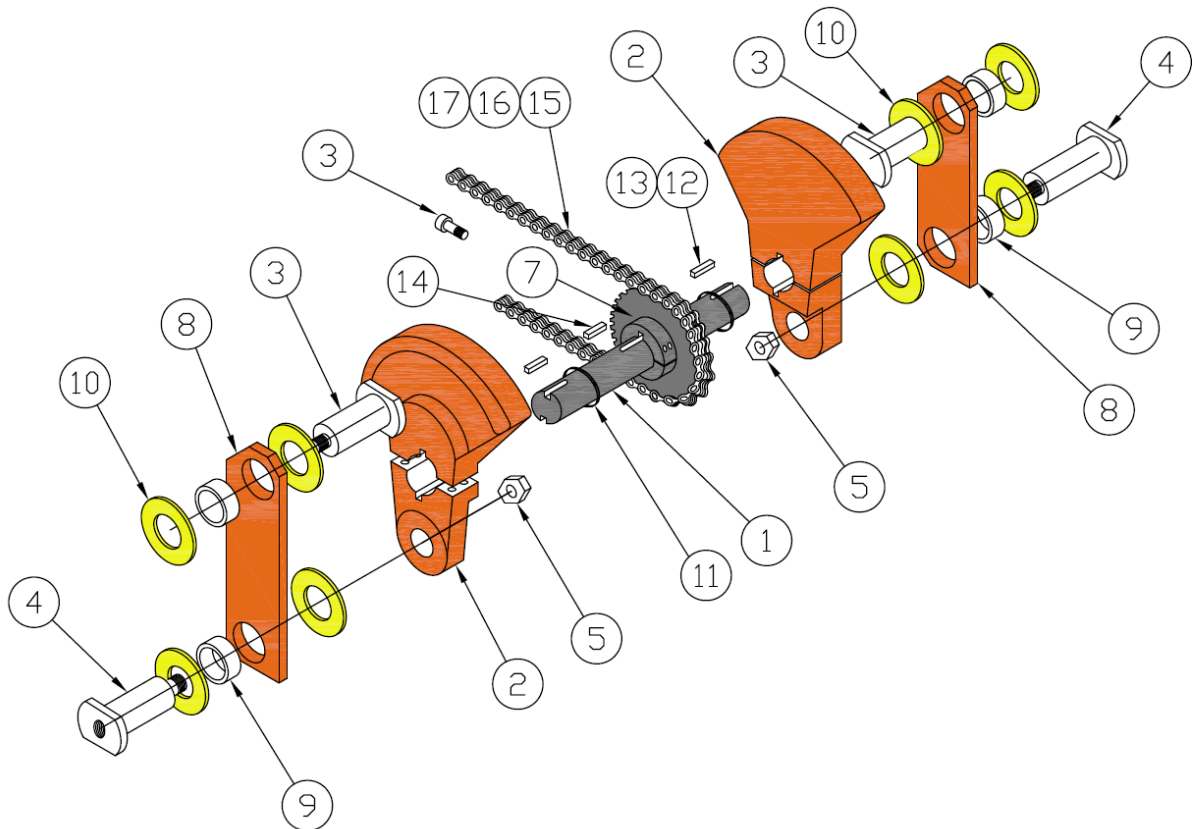
**Trimmer Platen Drive Upgrade – Assembly No. 90031-60
Double Keyed Shaft, Split Crank & Double 60 Chain Retrofit**

Item	Adrian	OEM	Description	Qty.
1	635092	120976	Crank Shaft, Double Keyed	1
2	635098	120975	Split Crank Counter Weights	2
3	430768	829415	Link Pin	2
4	430565	829010	Crank Pin	2
5	138515	325030	3/4 – 16 Jam Nut	4
6	295593	670072	Flange Bearing (Not Shown)	2
7	632628	126165	Driven Sprocket, Split D-60 w/ SHCS	1
8	413308	832295	Link	2
9	268530	615029	Bearing	4
10	275516	640031	Thrust Washer	8
11	795571	470043	Snap Ring	2
12	636390	121279	Key	4
13	*****	*****	10 – 32 x 3/4 FHCS	4
14	90138	*****	Key	2
15	765670	410149	Roller Chain, 60-2 – 10' / Box	1
16	765135	410320	Master Link, 60-2	1
17	765157	410304	Offset Link, 60-2	1
18	765732	410426	Drive Sprocket, D60 (Not Shown)	1
19	90166	*****	Hub, 1.50" (for Ferguson Gearbox) (Not Shown)	1
20	90167	*****	Hub, 1.25" (for Geneva Gearbox) (Not Shown)	1
21	785582	450056	Idler Sprocket, D60 (Not Shown)	1



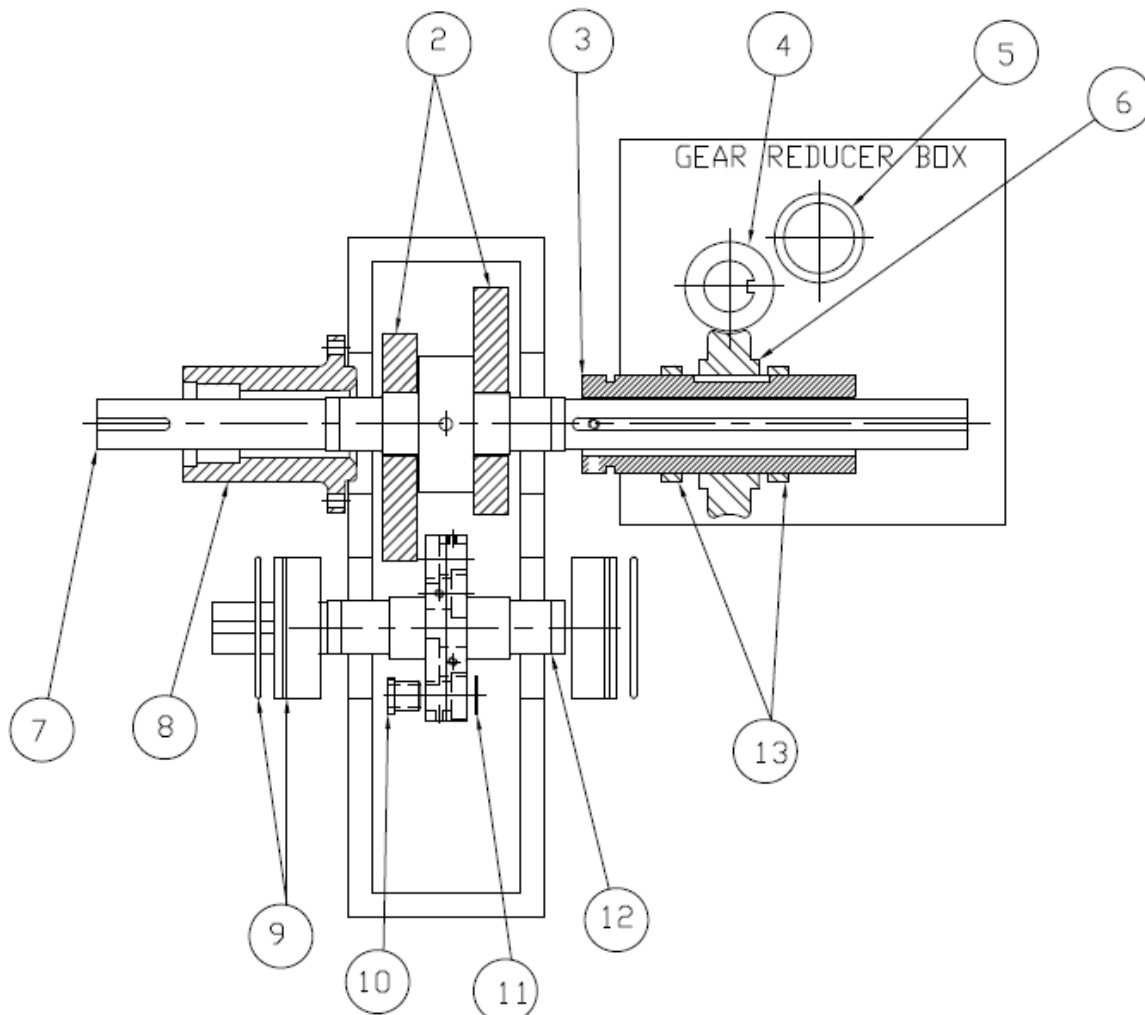
**Trimmer Platen Drive Upgrade – Assembly No. 90031-50
Double Keyed Shaft, Split Crank & Double 50 Chain Retrofit**

Item	Adrian	OEM	Description	Qty.
1	635092	120976	Crank Shaft, Double Keyed	1
2	635098	120975	Split Crank Counter Weights	2
3	430768	829415	Link Pin	2
4	430565	829010	Crank Pin	2
5	138515	325030	3/4 – 16 Jam Nut	4
6	295593	670072	Flange Bearing (Not Shown)	2
7	635099	120977	Driven Sprocket, Split D-50 w/ SHCS	1
8	413308	832295	Link	2
9	268530	615029	Bearing	4
10	275516	640031	Thrust Washer	8
11	795571	470043	Snap Ring	2
12	636390	121279	Key	4
13	*****	*****	10 – 32 x 3/4 FHCS	4
14	90138	*****	Key	2
15	765692	410176	Roller Chain, 50-2 – 10' / Box	1
16	765610	410139	Master Link, 50-2	1
17	765675	410140	Offset Link, 50-2	1
18	90289	*****	Drive Sprocket, D50Q24 (Not Shown)	1
19	90166	*****	Hub, 1.50" (for Ferguson Gearbox) (Not Shown)	1
20	90167	*****	Hub, 1.25" (for Geneva Gearbox) (Not Shown)	1
21	785557	450004	Idler Sprocket, D50 (Not Shown)	1



PL-90949 Ferguson Index Drive & Reducer Assembly

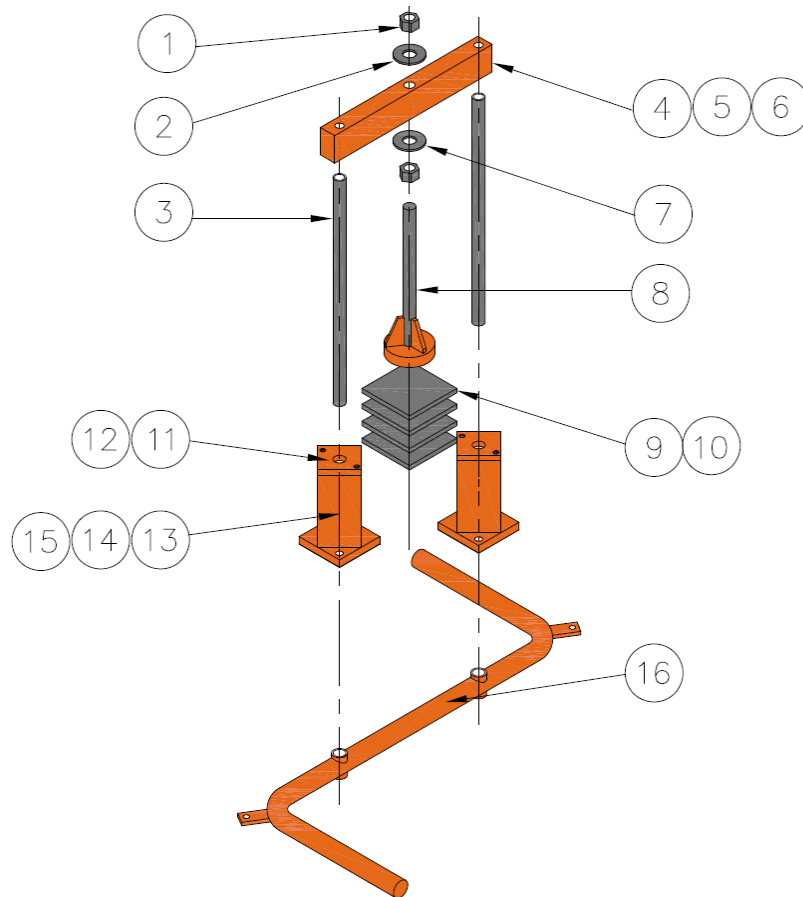
Item	Adrian	Description	Qty.
1	PL-90950	Seal & Bearing Kit (not shown)	1
2	90916	Cams	2
3	90940	Shaft Sleeve	1
4	90952	Worm Shaft	1
5	90956	Shim, Worm Shaft	1
6	90951	Worm Gear, Bronze	1
7	90302	Output Cam Shaft	1
8	90939	Shaft Housing	1
9	90959	Eccentric Bearing	2
10	90942	Eccentric Cam Bushing	6
11	90935	Hardened Washer	6
12	90931	Output Cam Follower Shaft	1
13	90955	Spacer for Reducer	2



Ferguson Model: P500
Drive Code: P5-3-FM150-130

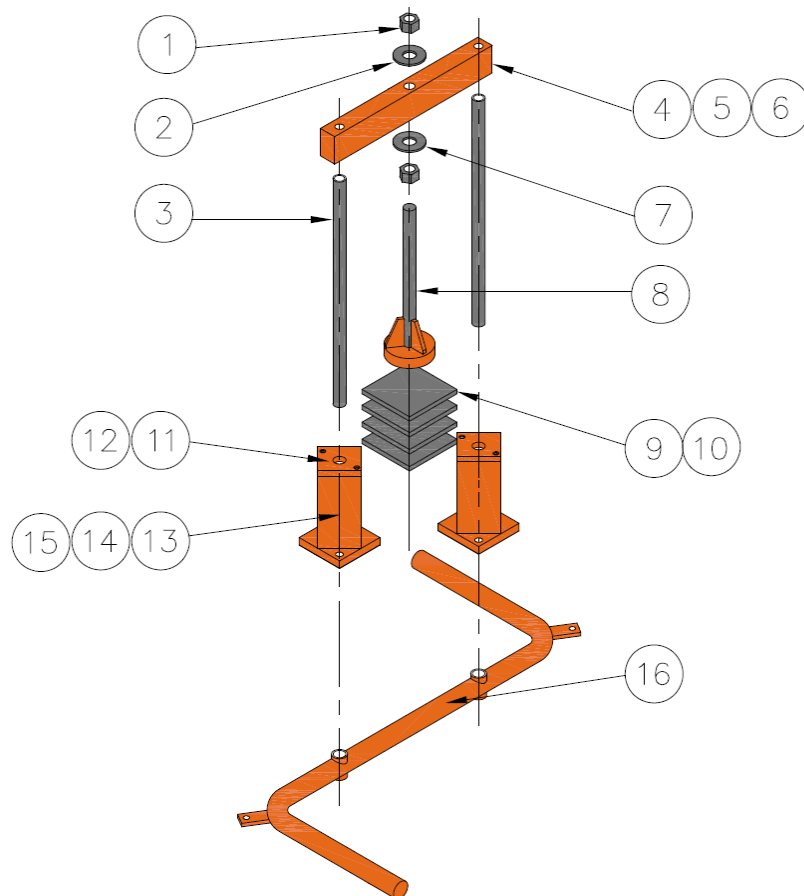
"S" Bar Assembly – Model 10026

Item	Adrian	OEM	Description	Qty.
1	138515	325030	3/4 – 16 Jam Nut Hex	2
2	188565	355010	3/4 Flat Washer	2
3	443483	882852	Guide Rod	2
4	481098	853975	Cross Bar	1
5	185563	350012	1/2 Lock Washer	2
6	360551	219003	1/2 – 13 x 1 1/2 SHCS	2
7	185567	350014	3/4 Lock Washer	2
8	481045	853980	Stop Rod, Upper	1
9	481046	853981	Stop Pad	4
10	155562	300016	.500 x 1 Shoulder Screw	1
11	443470	882849	Cap	2
12	365514	210038	10 – 32 x 1/2 SHCS	4
13	443485	882850	Bushing Housing	2
14	441580	883059	Spacer	2
15	225556	660001	Bushing	4
16	443477	882844	"S" Bar	1
17	91464	-----	Container Guide (Not Shown)	1



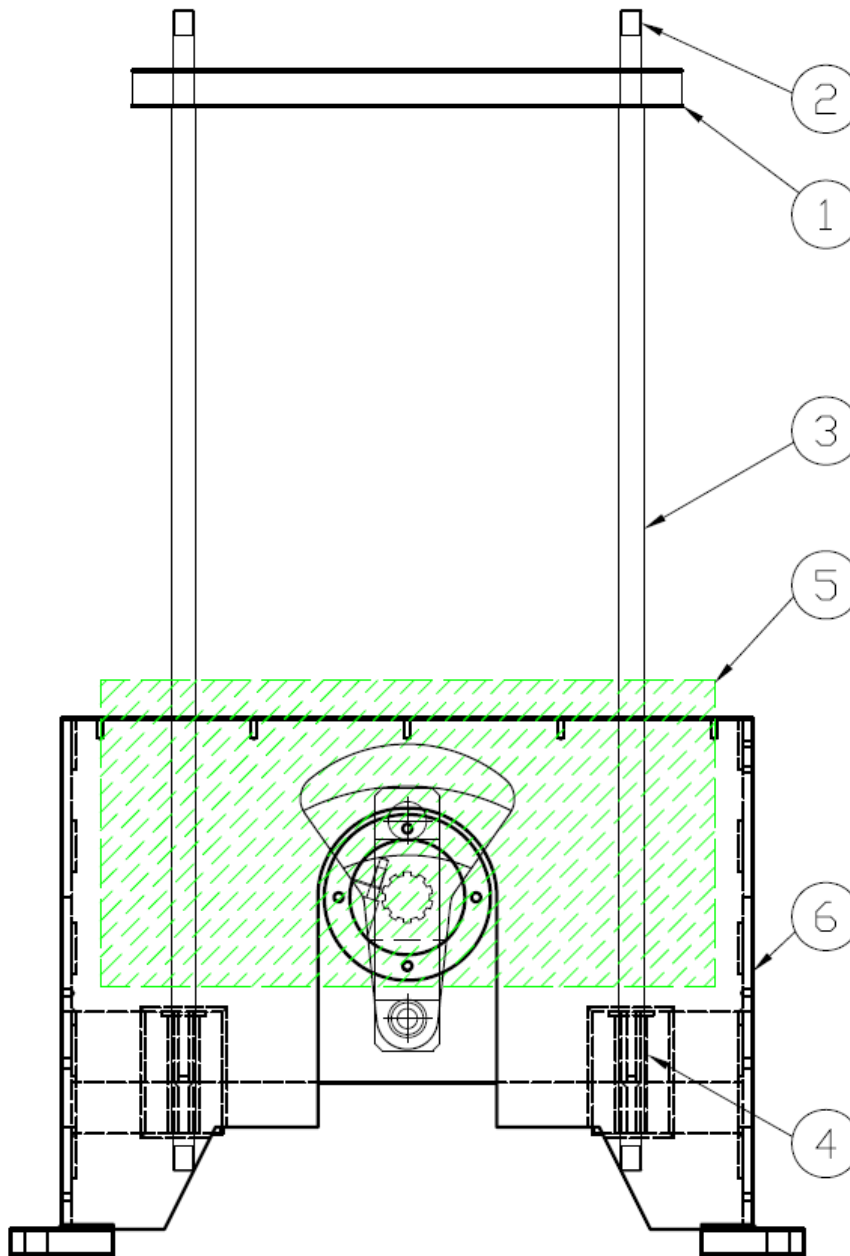
"S" Bar Assembly – Model 10039 - 10041

Item	Adrian	OEM	Description	Qty.
1	138515	325030	3/4 – 16 Jam Nut Hex	2
2	188565	355010	3/4 Flat Washer	2
3	481092	853976	Guide Rod	2
4	481098	853975	Cross Bar	1
5	185563	350012	1/2 Lock Washer	2
6	360551	219003	1/2 – 13 x 1 1/2 SHCS	2
7	185567	350014	3/4 Lock Washer	2
8	481045	853980	Stop Rod, Upper	1
9	481046	853981	Stop Pad	4
10	155562	300016	.500 x 1 Shoulder Screw	1
11	481099	853977	Cap	2
12	378533	245022	1/4 – 20 x 5/8 BHCS	8
13	487306	854291	Bushing Housing	2
14	487305	854290	Spacer	2
15	225556	660001	Bushing	4
16	487342	854286	"S" Bar	1
17	91221	-----	"S" Bar (Solid Aluminum Upgrade – Not Shown)	1
18	487349	854287	Container Guide (Not Shown)	1



Trimmer Base Assembly – Models 10039 - 10041

Item	Adrian	OEM	Description	Qty.
1	472639	846127	Upper Platen	1
2	138519	325037	Hex Jam Nut, 1 1/4" - 7	8
3	472630	846129	Guide Rod (Tie Bar)	4
4	225558	660005	Ball Bushing	8
5	472659	846157	Lower Platen, Aluminum	2
6	91001	*****	Trimmer Base	1



Both Traditional and Extended Beam Lengths available