



**ADRIANTOOL**  
CORPORATION



**EXPERIENCE • PRECISION • QUALITY**

# PRODUCT CATALOG

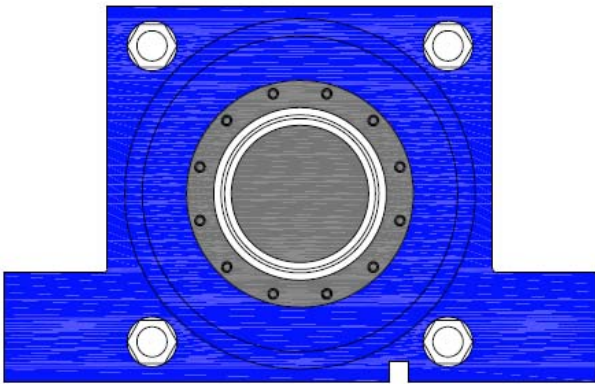
517.263.6530



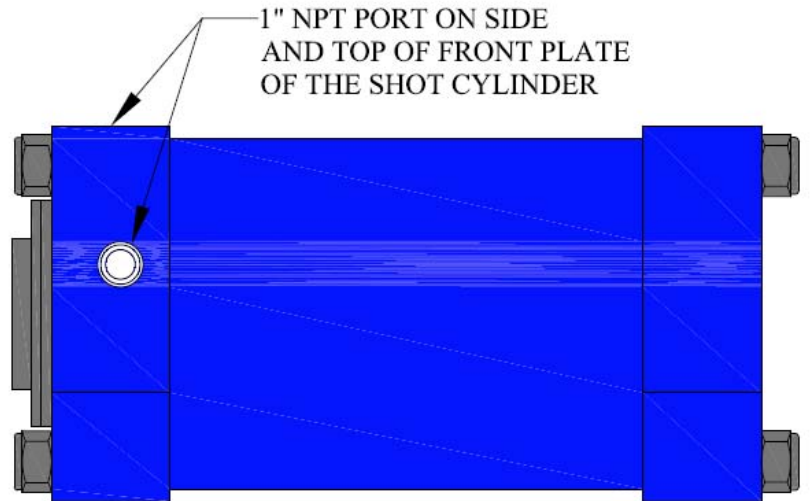
[www.adriantool.com](http://www.adriantool.com)

## Heavy Duty Shot Cylinders w/ 1" Ports

Item	Adrian	OEM	Description	Qty.
1	91246	834011	Shot Cylinder, 8" Bore x 6" Stroke w/ 3.5" Piston	1
2	90782	840476	Shot Cylinder, 8" Bore x 8" Stroke w/ 3.5" Piston	1
3	91049	*****	Shot Cylinder, 8" Bore x 9.25" Stroke w/ 3.5" Piston	1



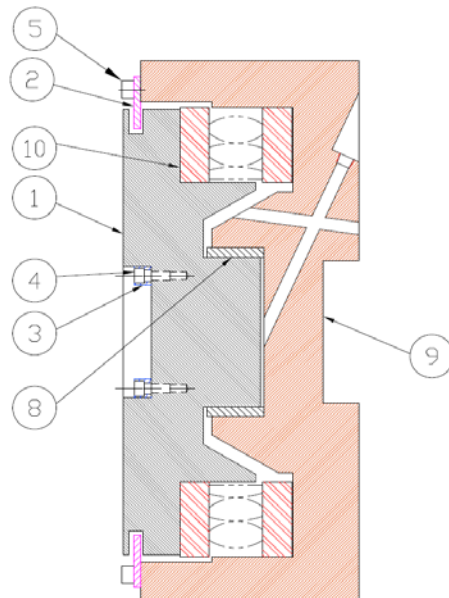
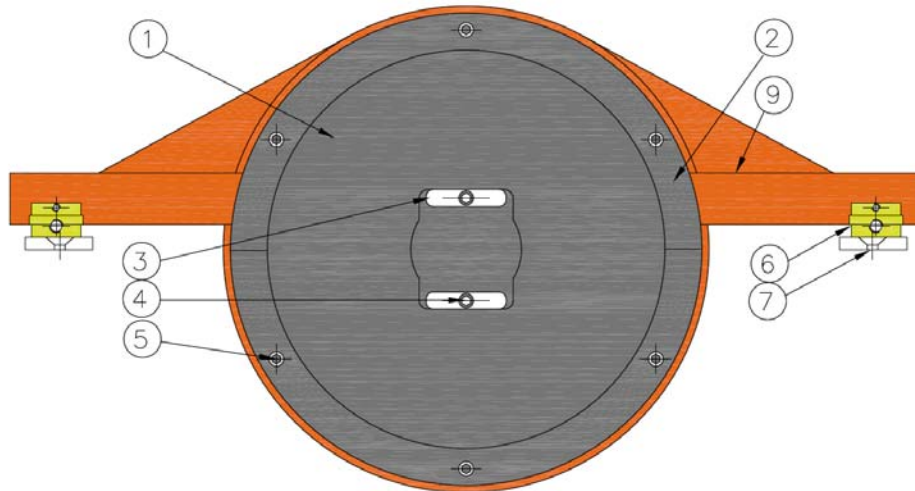
**FRONT VIEW**



**SIDE VIEW**

## Thrust Bearing Assembly Parts – 350R2 and 350R3 – Assembly No. 474287

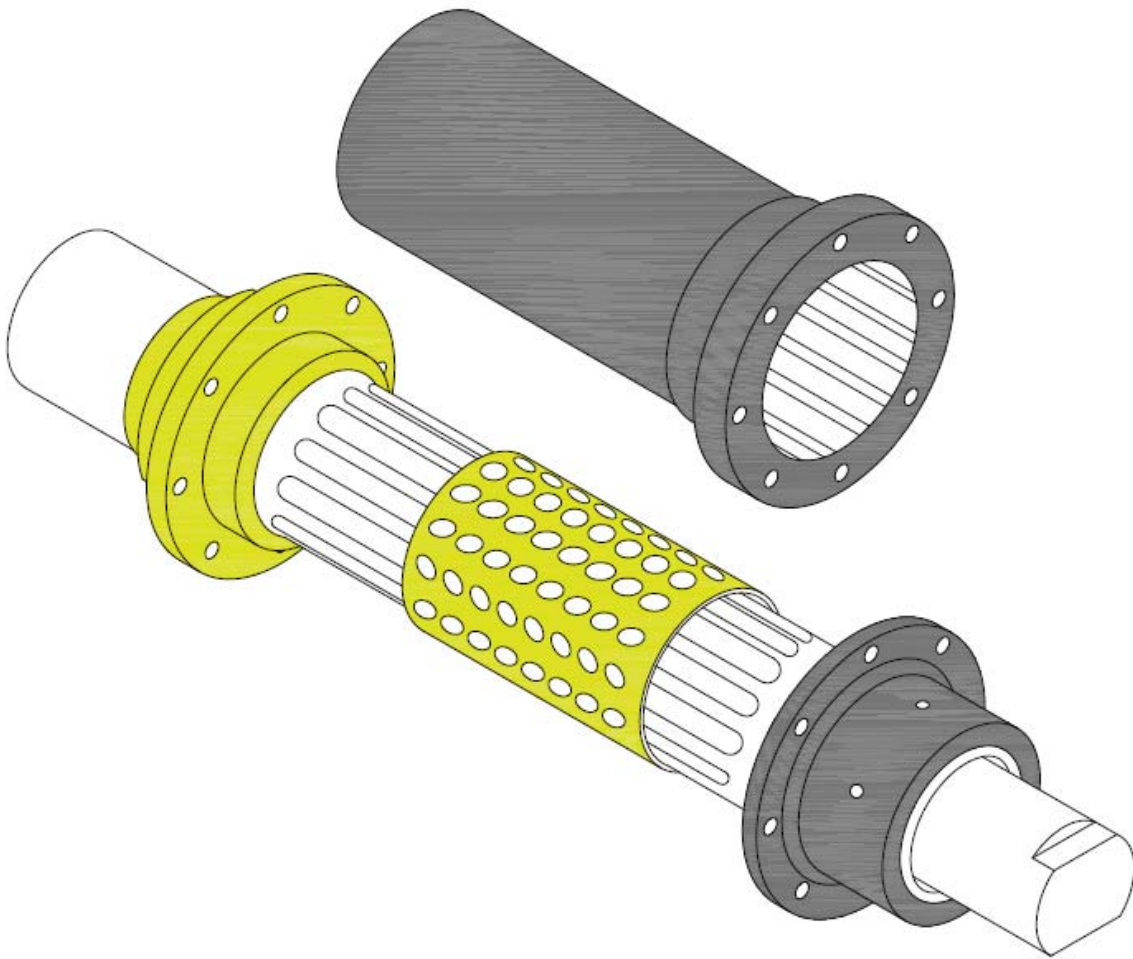
Item	Adrian	OEM	Description	Qty.
1	475797	840474	Rotary Bearing Housing	1
2	475791	840473	Baffle Ring-Split	2
3	413948	832785	Key	2
4	363550	212009	1/4 – 20 x 5/8 SHCS	2
5	367550	214009	5/16 – 18 x 7/8 SHCS	6
6	475257	840604	Shoe	2
7	475217	840634	Rail	2
8	413574	832048	Bushing (Not Shown)	1
9	475798	840475	Stationary Housing	1
10	235556	620001	Thrust Bearing with Races	1
<b>UPGRADE PARTS</b>				
10	91359	*****	Single Rotary Bearing (Upgrade to Bushing - Not Shown)	2
11	91360	*****	Modified Rotary Bearing Housing	1



**THRUST BEARING SECTION CUT**

## 10-Groove Ball Spline Assembly

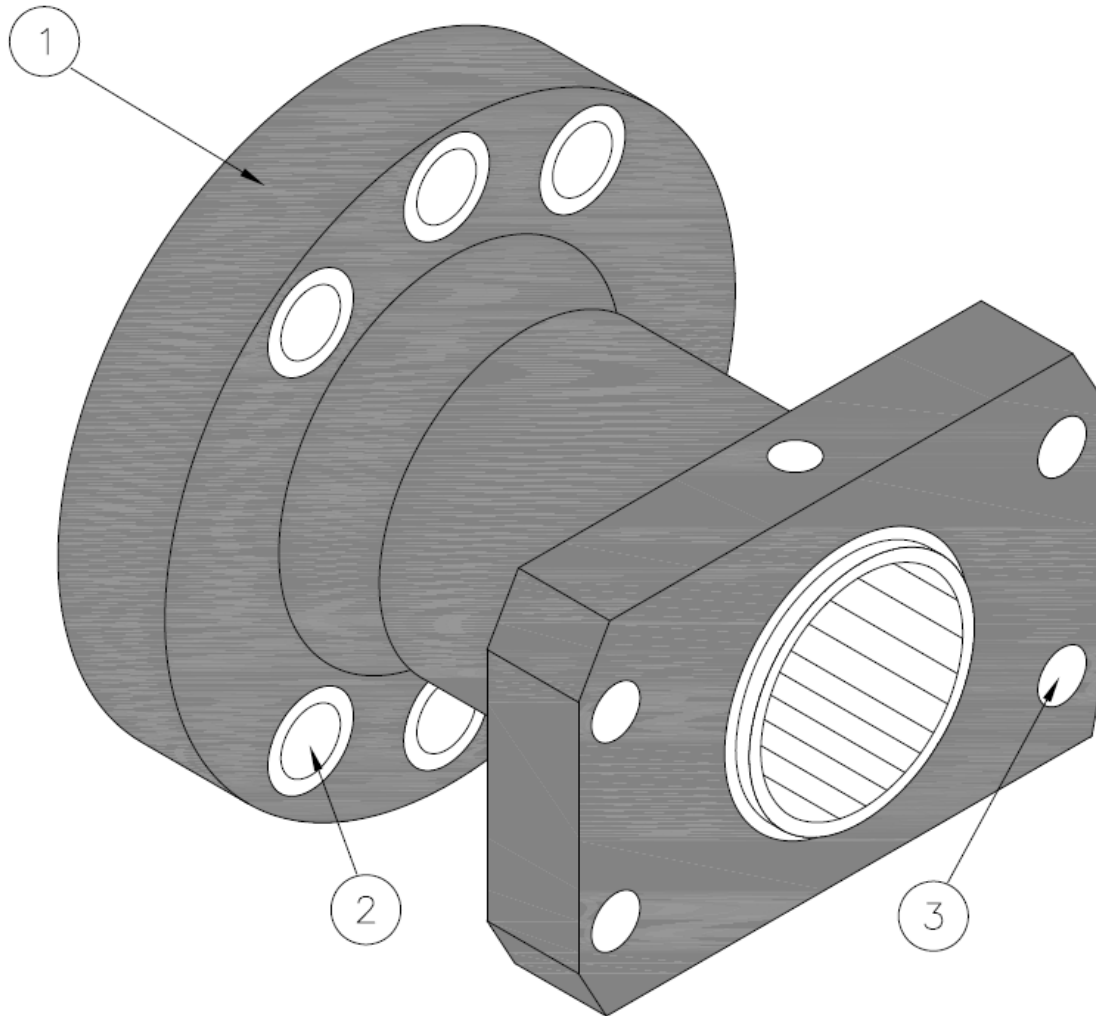
Item	Adrian	OEM	Description	Qty.
1	90758	*****	Ball Spline Assembly (350R2, 350R3, 400R11)	1
2	472456	*****	Ball Spline Assembly (350R4 and 400R20)	1
3	671311	*****	Ball Spline Assembly (R2000)	1





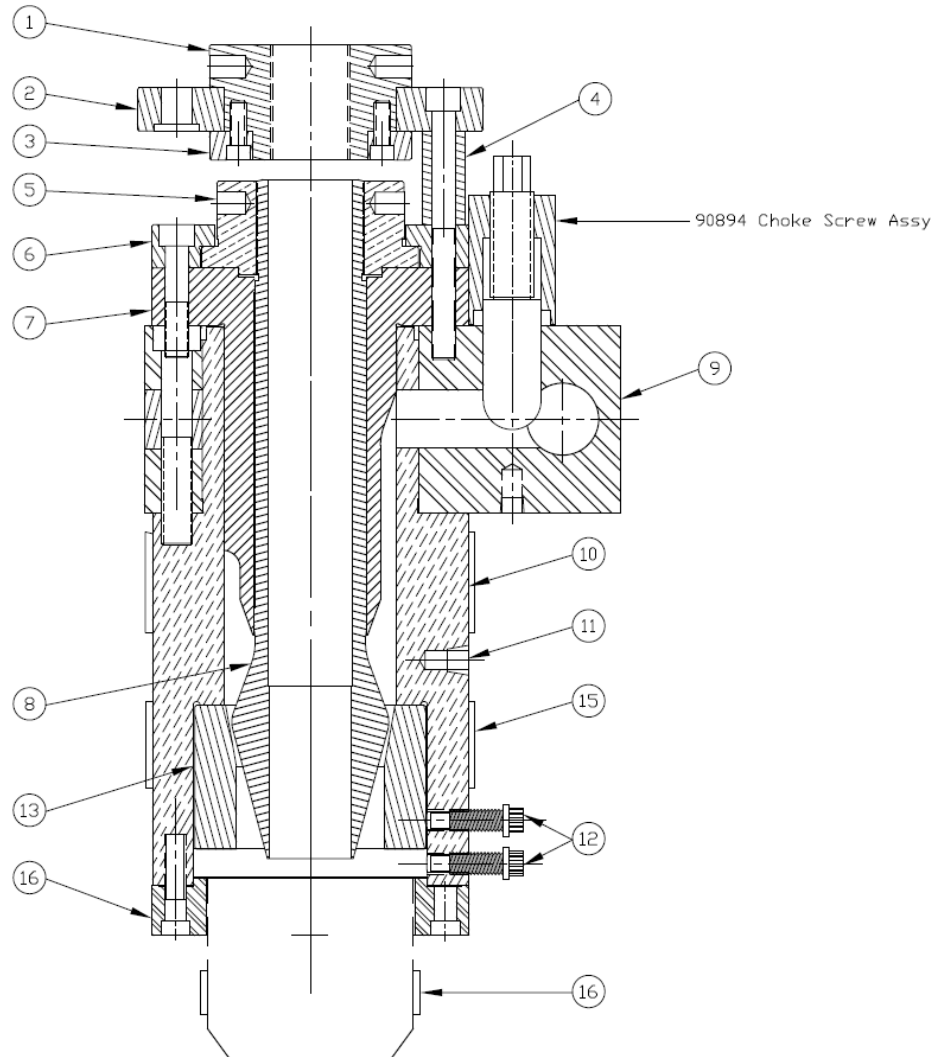
## Nozzle, -1 Type Head, Standard

Item	Adrian	OEM	Description	Qty.
1	662508	116095	Nozzle	1
2	90434	*****	3/4 - 10 x 2 3/4 LG SHCS / Barrel	6
3	90433	*****	5/8 - 11 x 2 1/2 LG SHCS / Manifold	4



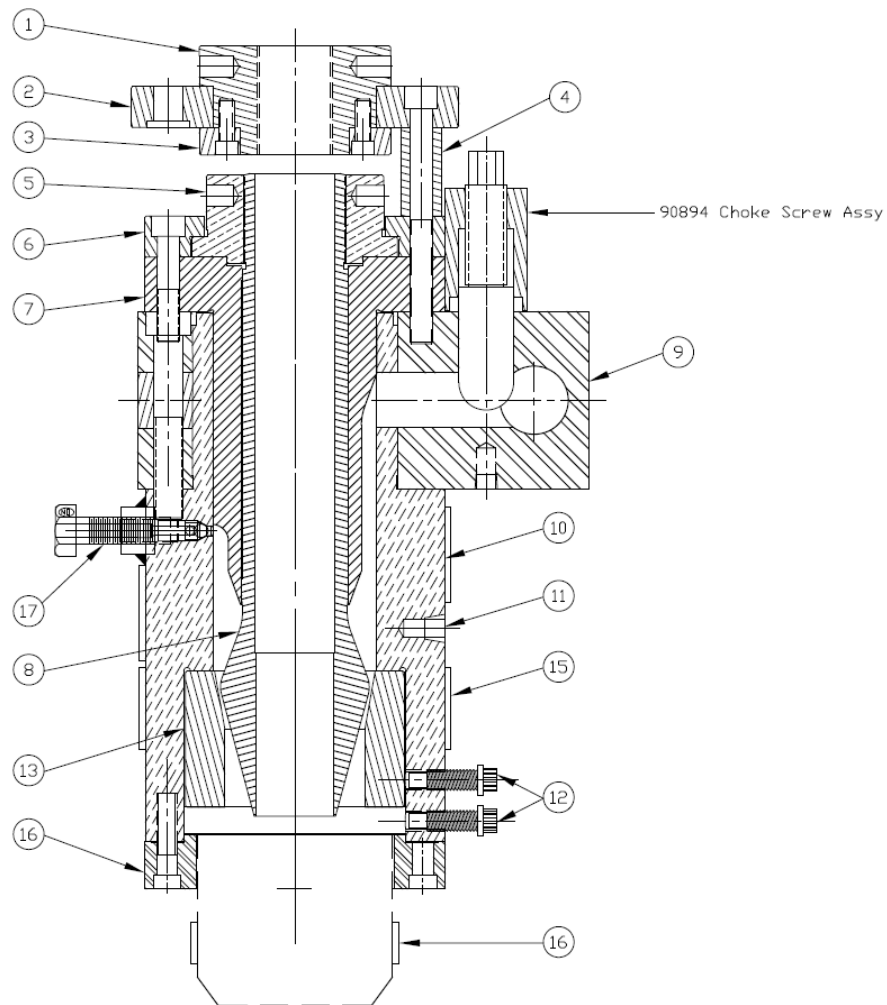
## -1 Style Die Head Assembly

Item	Adrian	OEM	Description	Qty.
1	413799	832477	Mandrel Adjusting Nut	1
2	413795	832470	Retaining Plate, Mandrel Adjusting Nut	1
3	413796	832471	Retaining Ring, Mandrel Adjusting Nut	1
4	439170	827349	Spacer	2
5	413793	832472	Mandrel Adjusting Nut	1
6	413791	832473	Adjusting Nut Retainer Plate	1
7	413797	832474	Upper Mandrel Sleeve	1
8	413798	832475	Lower Mandrel Sleeve	1
9	TBD	*****	Die Block to be Determined by Head Configuration	1
10	477207	844694	Aluminum Seal Ring	1
11	413794	832478	Feed Throat	1
12	492134	876328	3/8 – 16 x 1 1/4 FHCS	8
13	413792	832476	Adjusting Ring (Pressure Ring)	1
14	432539	826027	Clamp Ring (Die Retainer Ring)	1
15	91064	*****	Feed Throat Heater Band, 5.5" ID x 2" w/ 24" Lead	2
16	90968	*****	Die Tip Heater Band, 3.5" ID x 1" w/ 24" Lead	1



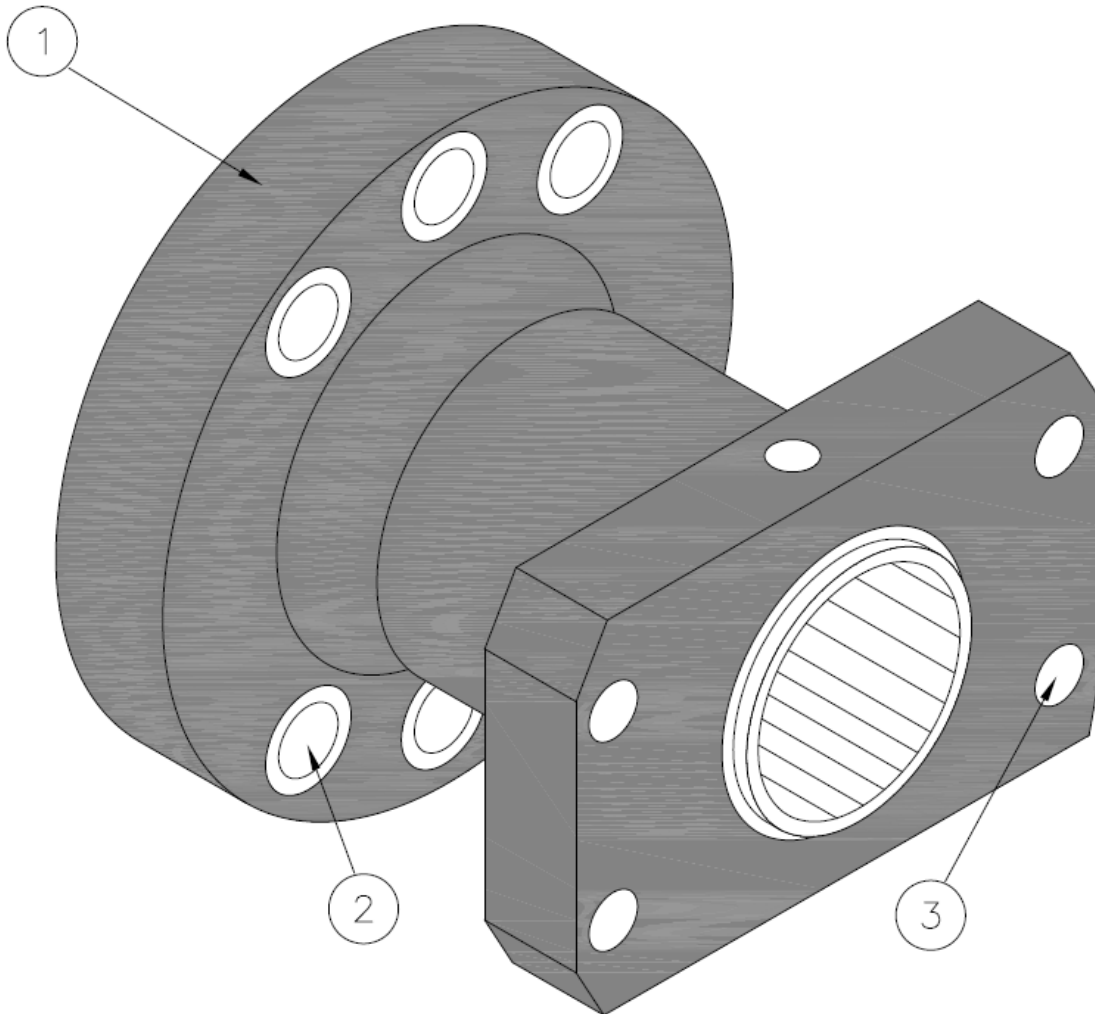
## -1 Style Die Head Assembly with Bleed Port

Item	Adrian	OEM	Description	Qty.
1	413799	832477	Mandrel Adjusting Nut	1
2	413795	832470	Retaining Plate, Mandrel Adjusting Nut	1
3	413796	832471	Retaining Ring, Mandrel Adjusting Nut	1
4	439170	827349	Spacer	2
5	413793	832472	Mandrel Adjusting Nut	1
6	413791	832473	Adjusting Nut Retainer Plate	1
7	413797	832474	Upper Mandrel Sleeve	1
8	413798	832475	Lower Mandrel Sleeve	1
9	TBD	*****	Die Block to be Determined by Head Configuration	1
10	477207	844694	Aluminum Seal Ring	1
11	449151	887303	Feed Throat	1
12	492134	876328	3/8 – 16 x 1 1/4 FHCS	8
13	413792	832476	Adjusting Ring (Pressure Ring)	1
14	432539	826027	Clamp Ring (Die Retainer Ring)	1
15	91064	*****	Feed Throat Heater Band, 5.5" ID x 2" w/ 24" Lead	2
16	90968	*****	Die Tip Heater Band, 3.5" ID x 1" w/ 24" Lead	1
17	90231	*****	Bleed Screw	1



## Nozzle, -4 Type Head, Standard

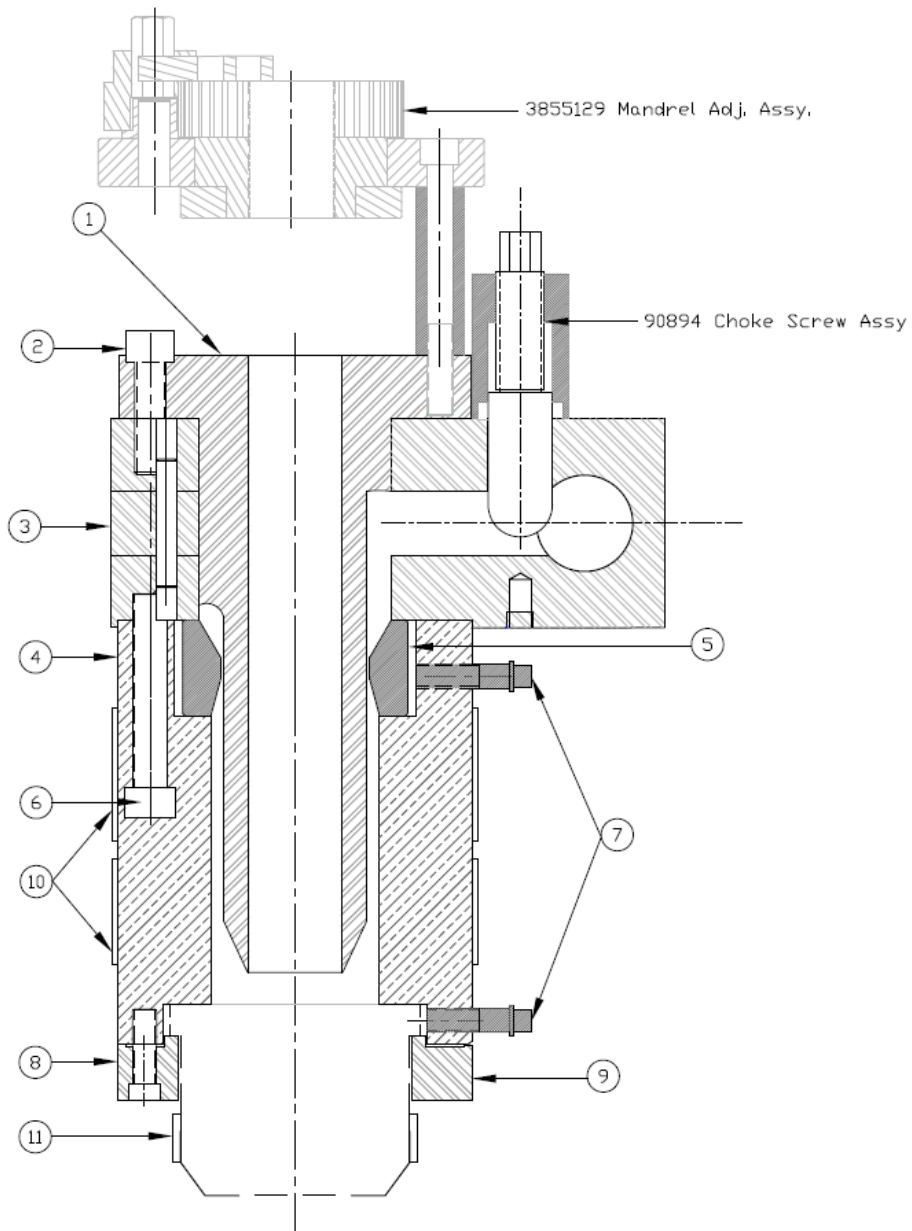
Item	Adrian	OEM	Description	Qty.
1	472019	846937	Nozzle	1
2	90434	*****	3/4 - 10 x 2 3/4 LG SHCS / Barrel	6
3	90433	*****	5/8 - 11 x 2 1/2 LG SHCS / Manifold	4





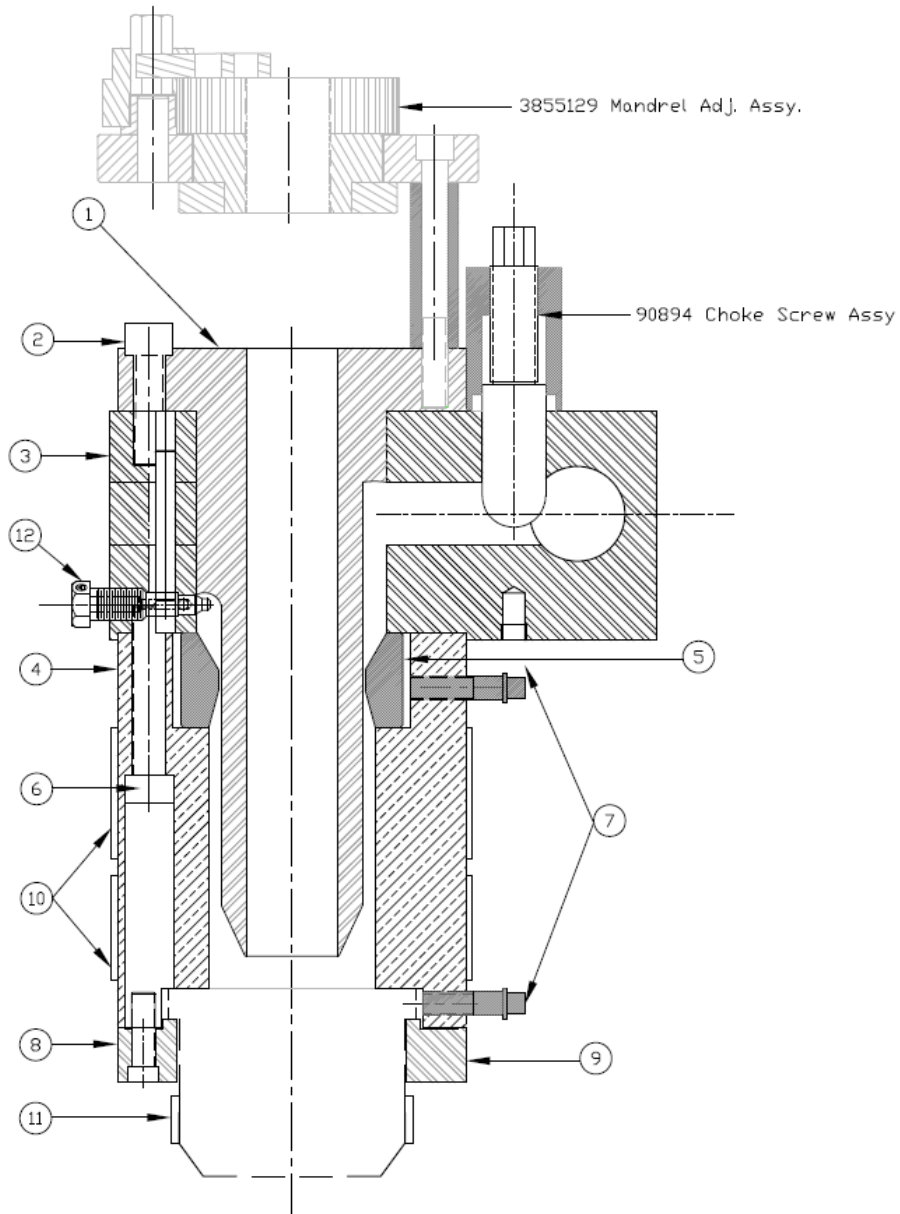
## -4 Style Die Head Assembly

Item	Adrian	OEM	Description	Qty / Cavity
1	492583	876052	Mandrel Sleeve with Bronze Tip (Diverter)	1
2	360551	219003	1/2 – 13 x 1 1/2 SHCS	6
3	*****	*****	Die Block to be determined by Head Configuration	1
4	479569	847017	Feed Throat	1
5	479564	847018	Adjusting Ring (Pressure Ring)	1
6	360553	219002	1/2 – 13 x 3 1/2 SHCS	6
7	492134	876328	Parison Bolts (Ferry Cap Screw with 1/2 Dog Point)	8
8	432539	826027	Clamp Ring (Die Retainer Ring)	1
9	362551	216003	3/8 – 16 x 1 SHCS	6
10	91064	*****	Feed Throat Heater Band, 5.5" ID x 2" w/ 24" Lead	2
11	90968	*****	Die Tip Heater, 3.5" ID x 1" w/ 24" Lead	1



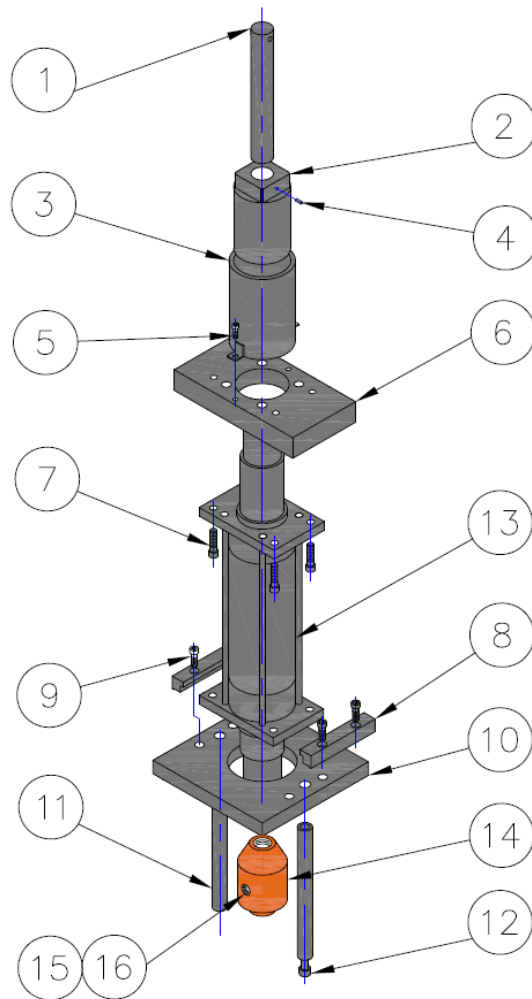
### -4 Style Die Head Assembly with Bleed Port

Item	Adrian	OEM	Description	Qty / Cavity
1	492583	876052	Mandrel Sleeve with Bronze Tip (Diverter)	1
2	360551	219003	1/2 – 13 x 1 1/2 SHCS	6
3	*****	*****	Die Block to be determined by Head Configuration	1
4	442044	886988	Feed Throat	1
5	479564	847018	Adjusting Ring (Pressure Ring)	1
6	360553	219002	1/2 – 13 x 3 1/2 SHCS	6
7	492134	876328	Parison Bolts (Ferry Cap Screw with 1/2 Dog Point)	8
8	432539	826027	Clamp Ring (Die Retainer Ring)	1
9	362551	216003	3/8 – 16 x 1 SHCS	6
10	91064	*****	Feed Throat Heater Band, 5.5" ID x 2" w/ 24" Lead	2
11	90968	*****	Die Tip Heater, 3.5" ID x 1" w/ 24" Lead	1
12	90231	*****	Bleed Screw	1



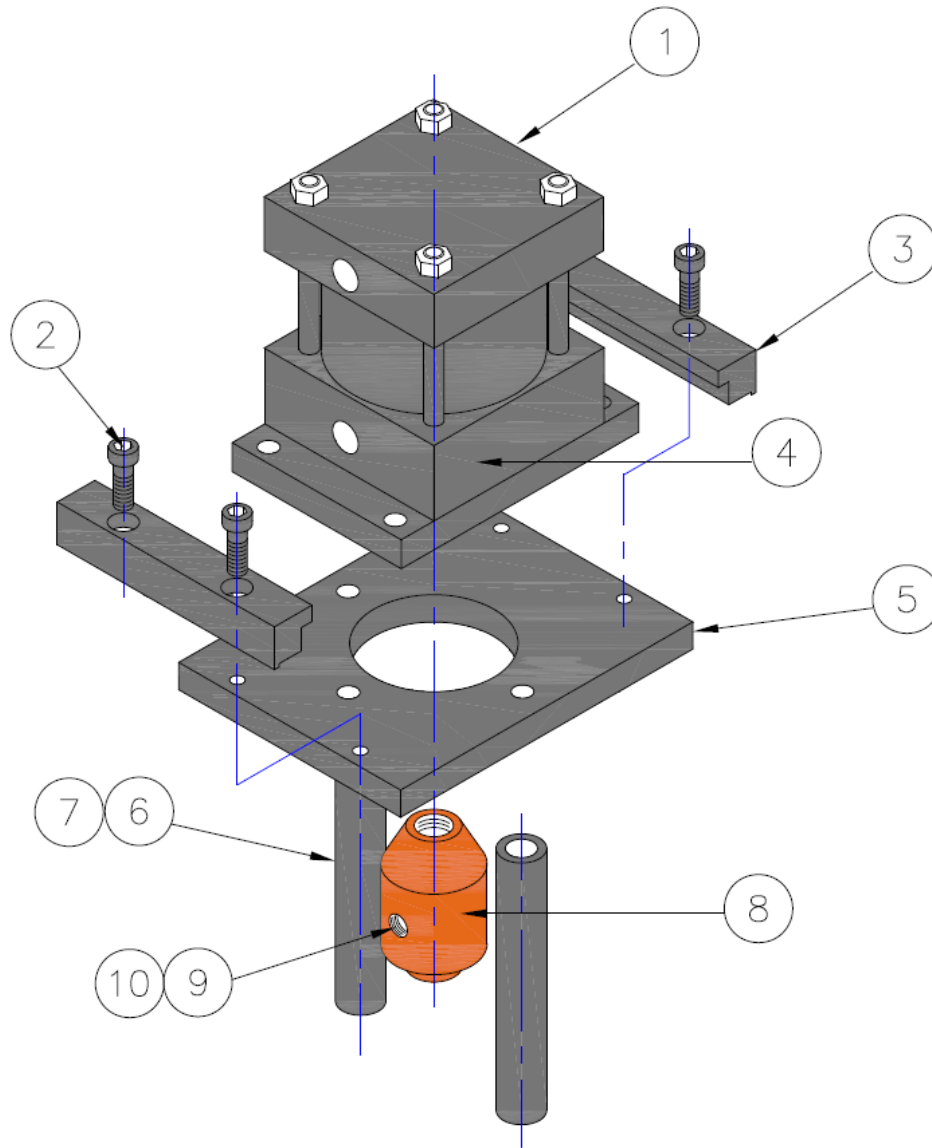
## Pre-finish, Pull-up – Double Ended Cylinder / Non-Programmed

Item	Adrian	OEM	Description	Qty.
1	441662	883116	Rod Extension	1
2	651021	103963	Nut	1
3	447541	884083	Guard, BP Adjustment	1
4	90329	*****	1/4 – 28 x 1/2 SHSS	2
5	378536	245021	1/4 – 20 x 1/2 BHCS	2
6	441445	883880	Mounting Plate, Cylinder	1
7	362552	216006	3/8 – 16 X 1 1/4 SHCS	4
8	413722	832466	Clamp, Pre-finish	2
9	362552	216006	3/8 – 16 X 1 1/4 SHCS	4
10	413727	832464	Mounting Plate, Cylinder	1
11	413728	832465	Spacer, Pre-finish	2
12	360562	219016	1/2 – 13 x 7 SHCS	2
13	449150	887309	Double Ended Cylinder	1
14	413729	832467	Air Adapter	1
15	3935557	2720004	5/16 Diameter x 1/4 LG Brass Plug, Rod	2
16	355527	200064	3/8 – 16 x 3/8 Set Screw, Socket	2



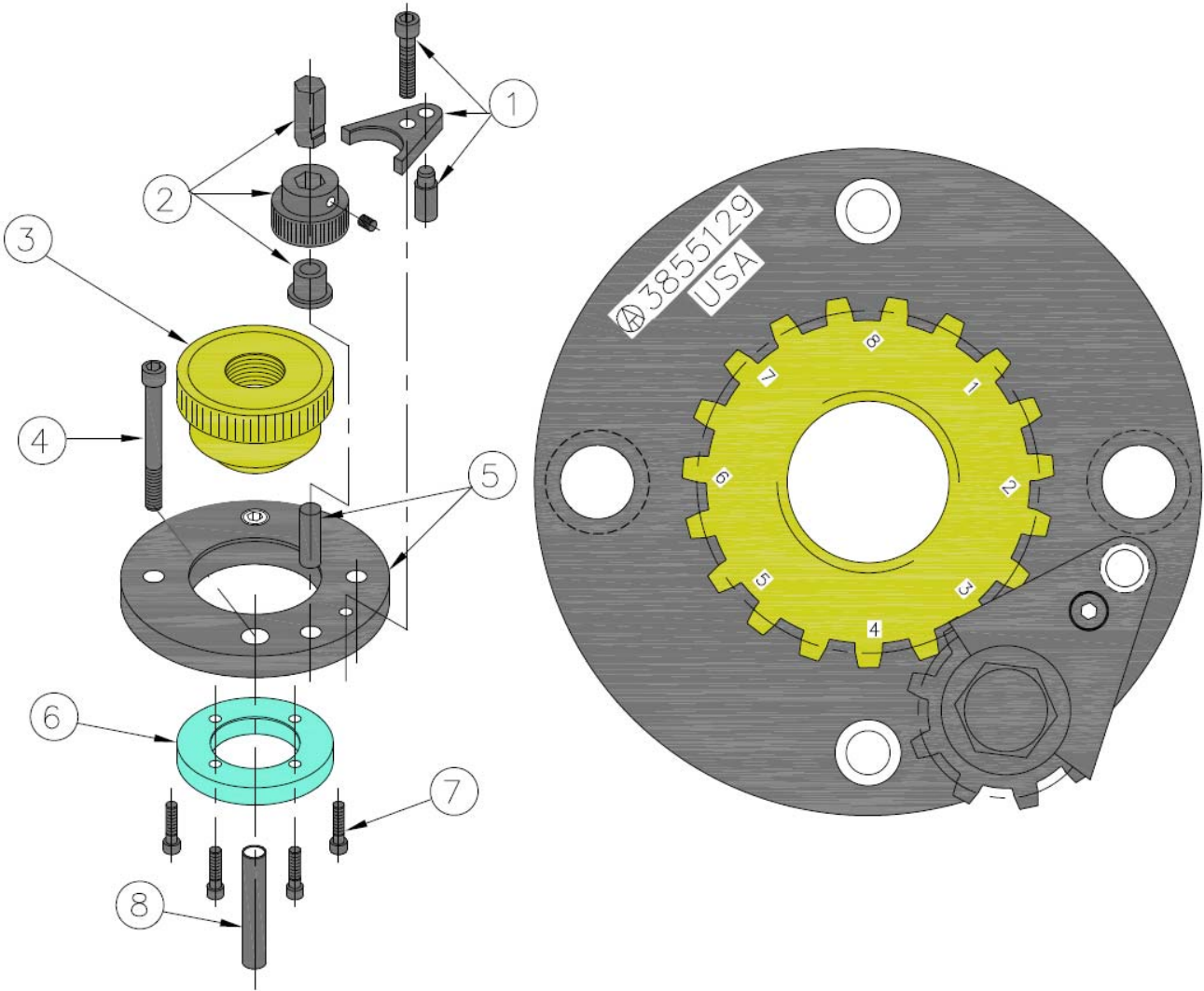
## Pre-finish, Pull-up – Single Ended Cylinder / Non-Programmed

Item	Adrian	OEM	Description	Qty.
1	6355551	1200003	Blow Pin Cylinder, 4" Bore x 1" Stroke	1
2	362552	216006	3/8 – 16 x 1 ¼ SCHS	4
3	413722	832466	Clamp, Cylinder	2
4	411531	833023	1/4" Spacer to Limit Stroke (Not Shown)	1
5	413727	832464	Mounting Plate, Cylinder	1
6	413728	832465	Spacer	2
7	360562	219016	1/2 – 13 x 7 SHCS	2
8	413729	832467	Air Adapter, 1/2 – 20 Thread	1
9	3935557	2720004	5/16 Diameter x 1/4 LG Brass Plug, Rod	2
10	355527	200064	3/8 – 16 x 3/8 Set Screw, Socket	2



### Mandrel Adjustment Assembly – Assembly No. 3855129

Item	Adrian	OEM	Description	Qty.
1	88357	55204	Lock Assembly, Mandrel Adjusting Nut	1
2	88351	55203	Gear - Small 19T, Mandrel Adjusting Nut	1
3	88367	55214	Nut & Gear - Bronze, Mandrel 1 3/8" - 16	1
4	362567	216014	3/8 – 16 x 3 1/2 SHCS (Not Shown)	2
5	88359	55207	Body, Mandrel Adjusting Nut	1
6	88354	55208	Ring - Retainer, Mandrel Adjusting Nut	1
7	323553	212002	1/4 - 20 x 3/4 LG SHCS	4
8	479533	847022	Spacer	2

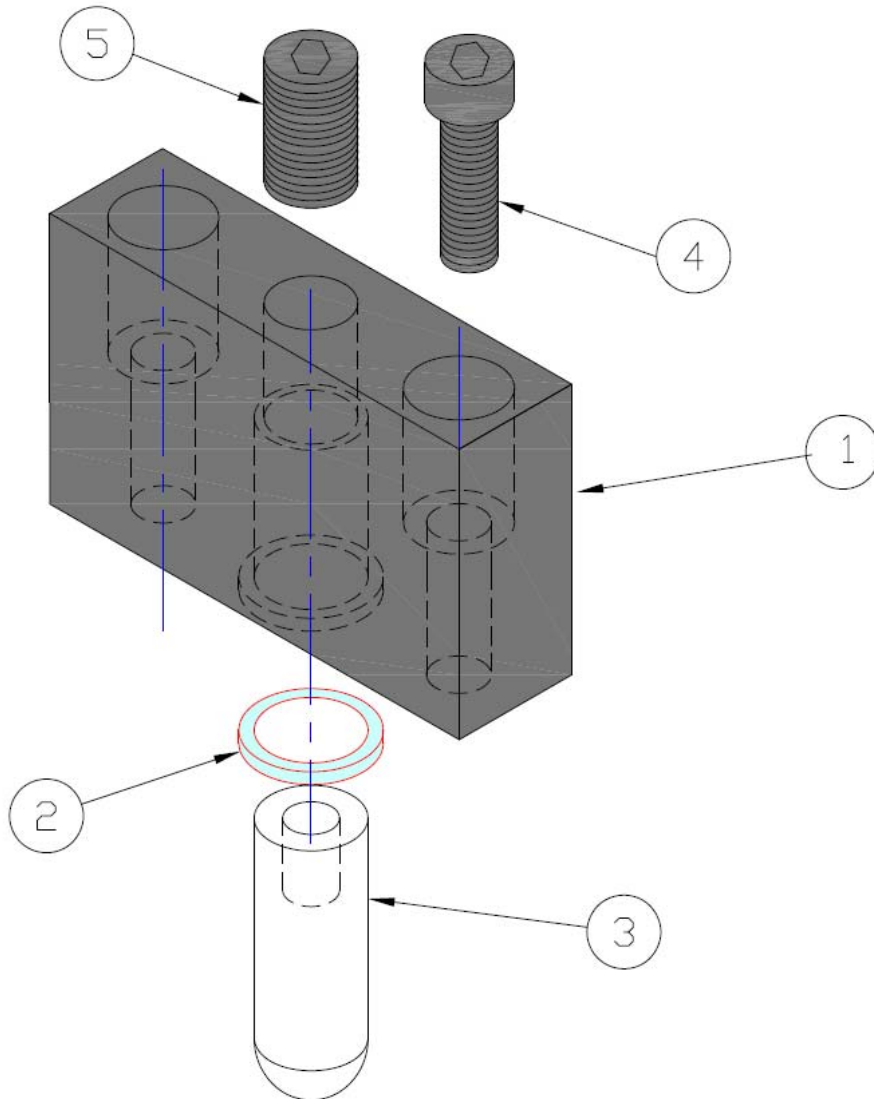


**Note:**  
 Ref. OEM Assembly No. 2500367



## Sealed Choke Screw Assembly - Assembly No. 90894

Item	Adrian	OEM	Description	Qty.
1	675938	140725	Choke Screw Plate	1
2	675932	140726	Seal Ring	1
3	675939	140727	1Pc. Choke Screw	1
4	362531	216023	Mounting Bolts, 3/8 – 16 x 2 1/2 SHCS	2
5	355124	*****	3/4-10 Adjusting Screw	1

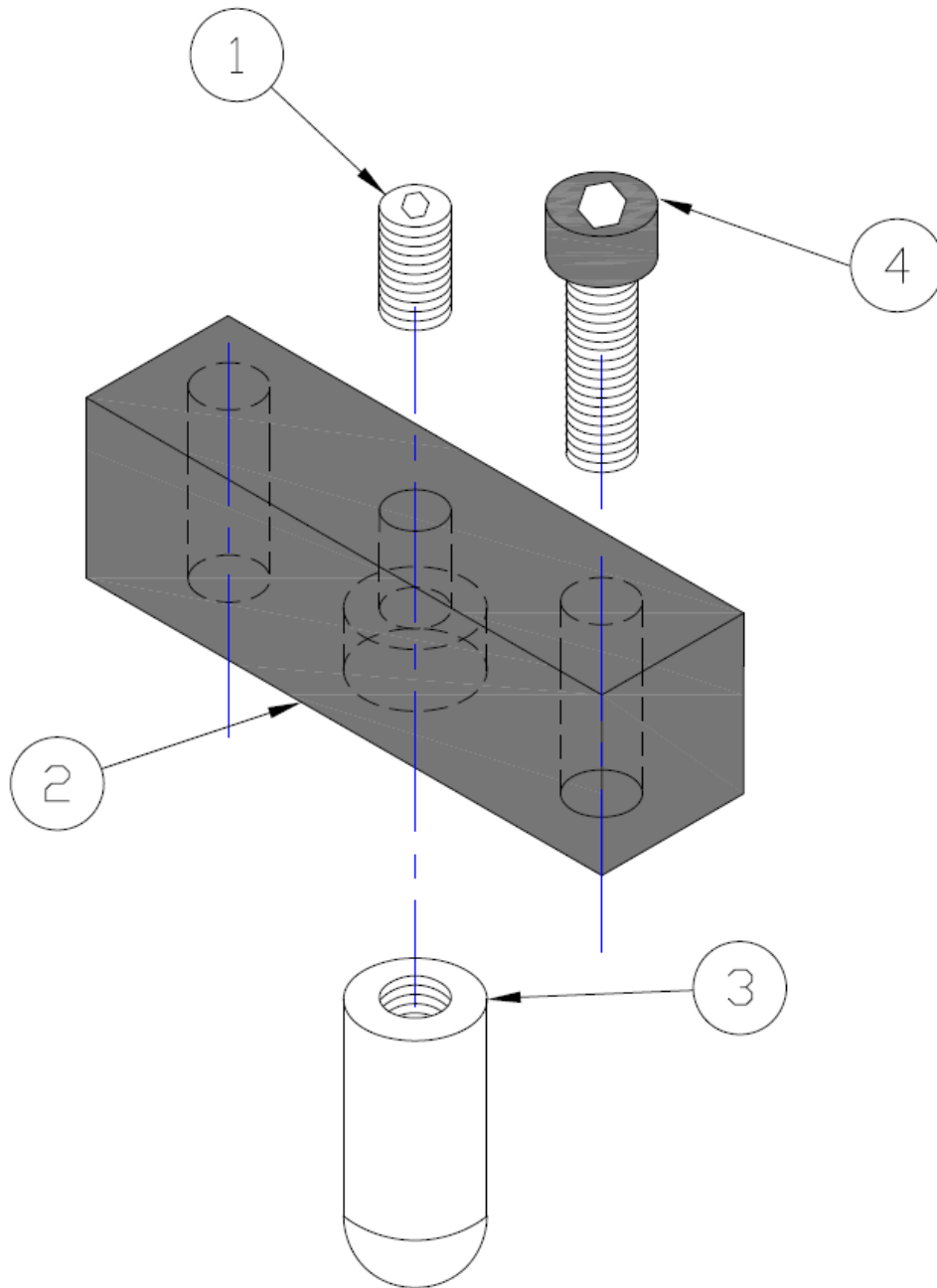


**Note:**

This style will fit a 1" bullet hole

## Standard Choke Screw Assembly

Item	Adrian	OEM	Description	Qty.
1	*****	*****	Adjusting Screw, 3/4 – 10 x 1 1/2 SHSS with Cup Point	1
2	413369	832217	Choke Screw Plate	1
3	413362	832216	Choke Screw	1
4	*****	*****	Mounting Bolts, 3/8 – 16 x 1 1/4 SHCS	2

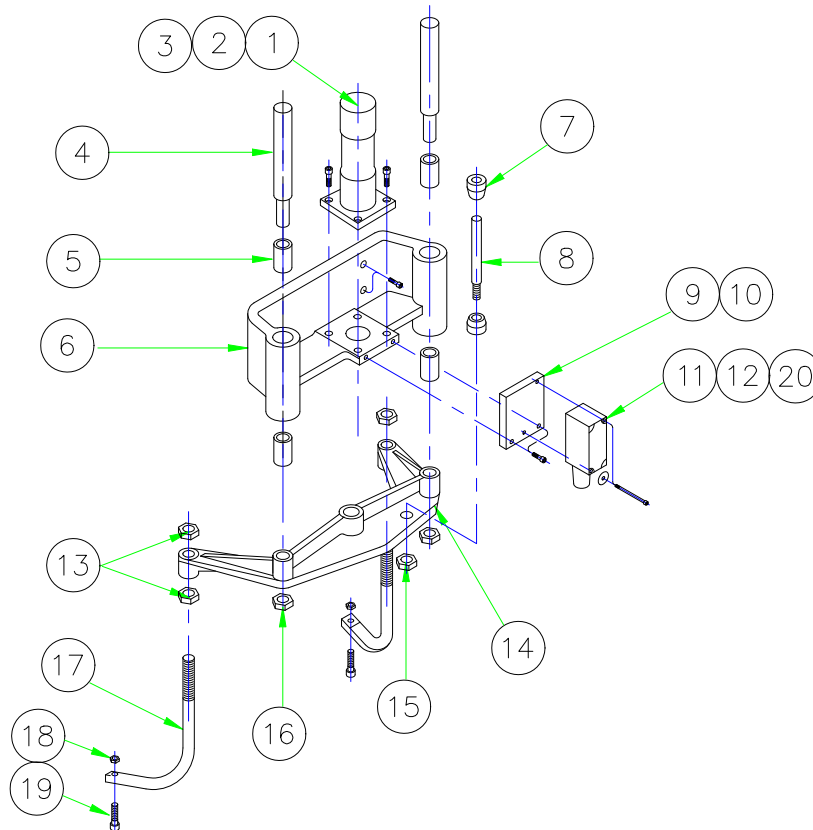


**Note:**

This style will fit both -1 and -4 Style Heads

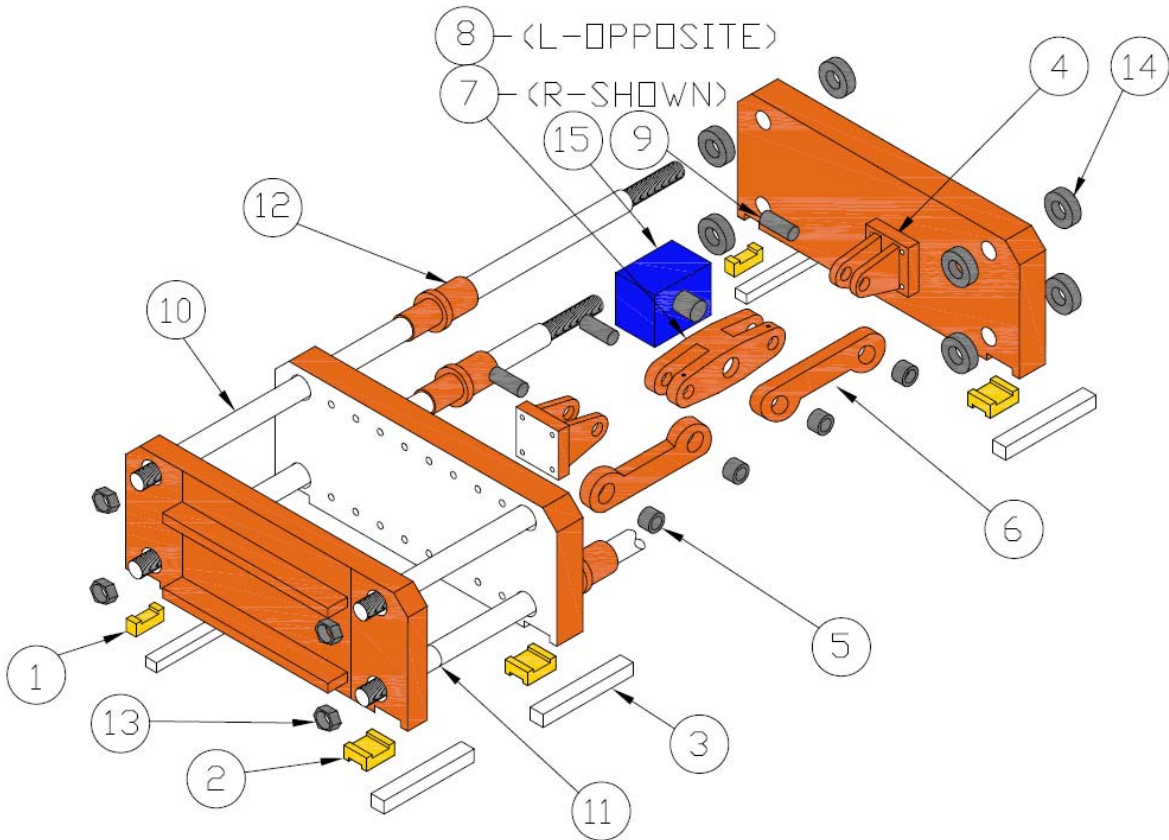
## Stripper Assembly

Item	Adrian	OEM	Description	Qty.
1	633553	1220002	Air Cylinder, 1 1/2 Bore	1
2	138532	325026	Jam Nut Hex, 5/8 – 18	1
3	367533	214022	5/16 – 18 x 2 1/4 SHCS	4
4	439712	827436	Guide Rod	2
5	225556	660001	Ball Bushing	4
6	439771	827443	Mounting Bracket	1
7	439714	827438	Limit Switch Cam	2
8	442584	886058	Limit Switch Rod	1
9	439773	827442	Limit Switch Plate	1
10	363554	212008	1/4 – 20 x 1/2 SHCS	2
11	1165553	3310002	Limit Switch	1
12	365578	210045	10 – 32 x 1 3/4 SHCS	2
13	115557	330004	Flex-Lock Nut, 5/8 – 18	4
14	TBD	TBD	Carrier	1
15	115553	330002	Self loc Hex Nut, 3/8 – 16	1
16	115551	330003	Self loc Hex Nut, 1/2 – 20	2
17	431498	823875	Strut	2
18	115552	330006	Self loc Hex Nut, 1/4 - 20	2
19	363557	212004	1/4 – 20 x 1 SHCS	2
20	1165566	3310011	Limit Switch Arm (Not Shown)	1



## 15x34 Clamp Single Rotac Clamp Layout

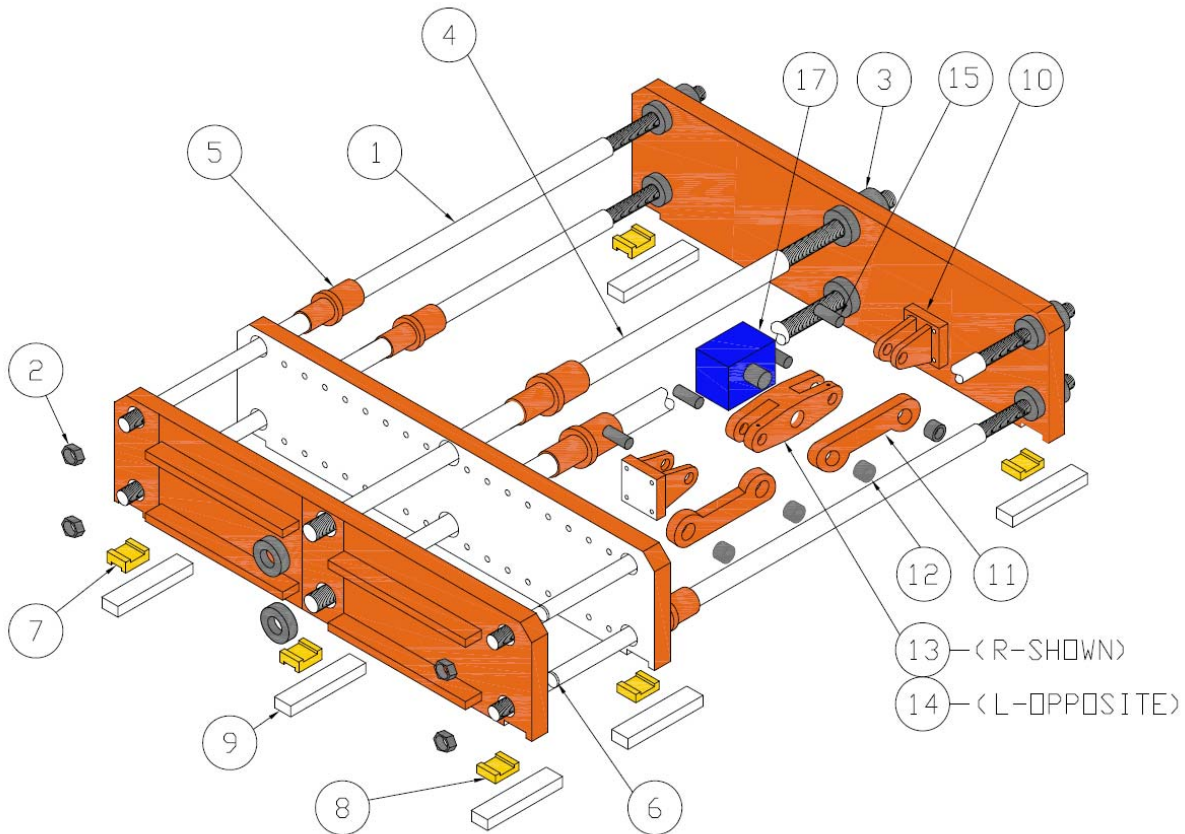
Item	Adrian	OEM	Description	Qty.
1	430707	829494	Platen Shoe	3
2	490778	879445	Platen Shoe, Guided	3
3	431933	823722	Platen Rail	6
4	476326	841261	Clevis	4
5	268532	615026	Toggle Bearing	8
6	476323	841262	Toggle Link	4
7	476380	841259	Rotac Adapter Arm, RH	1
8	476325	841260	Rotac Adapter Arm, LH	1
9	476321	841263	Toggle Pin	8
10	443079	882947	Tie Bar, 2"	4
11	476338	841225	Split Bushing	4
12	416146	831381	Tie Bar Bushing Retainer Assembly, 2"	4
13	135590	320079	Nylock Hex Nut	4
14	443074	882948	Tie Bar Nut, 2" Calibrated Rear Adjusting	8
15	438562	825016	Clamp Rotac, MPJ-63-2V OIL	1
16	PL-90642	*****	Fastener & Grease Fitting Kit (Not Shown)	1
17	91098	*****	Spanner Wrench 2" (Not Shown)	1



**Note: Call for Reconditioned Platens Quote**

## 15x27 Dbl Light Duty Clamp Layout

Item	Adrian	OEM	Description	Qty.
1	443079	882947	Tie Bar, 2"	4
2	135590	320079	Nylock Hex Nut	4
3	443074	882948	Tie Bar Nut, 2" Calibrated – Rear Adjusting	14
4	443072	882946	Tie Bar 2" - Center	2
5	416146	831381	Tie Bar Bushing Retainer Assembly, 2"	6
6	476338	841225	Split Bushing	4
7	430707	829494	Platen Shoe	6
8	490778	879445	Platen Shoe, Guided	3
9	431933	823722	Platen Rail	9
10	476326	841261	Clevis	8
11	476323	841262	Toggle Link	8
12	268532	615026	Toggle Bearing	16
13	476380	841259	Rotac Adapter Arm, RH	1
14	476325	841260	Rotac Adapter Arm, LH	1
15	476321	841263	Toggle Pin	16
16	476479	841847	Center Rotac Adapter (Not Shown)	1
17	438562	825016	Clamp Rotac, MPJ-63-2V OIL	2
18	PL-90636	*****	Fastener & Grease Fitting Kit (Not Shown)	1
19	91098	*****	Spanner Wrench 2" (Not Shown)	1

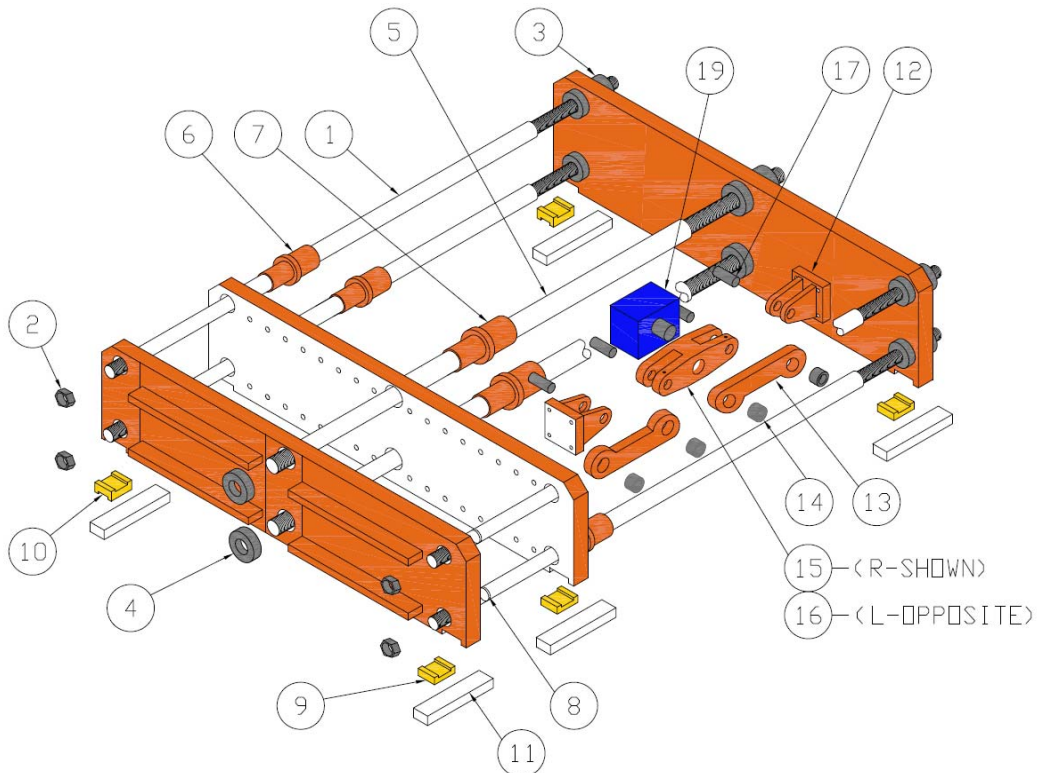


**Note: Call for Reconditioned Platens Quote**



## 15x27 Dbl "Medium" Duty Clamp Layout

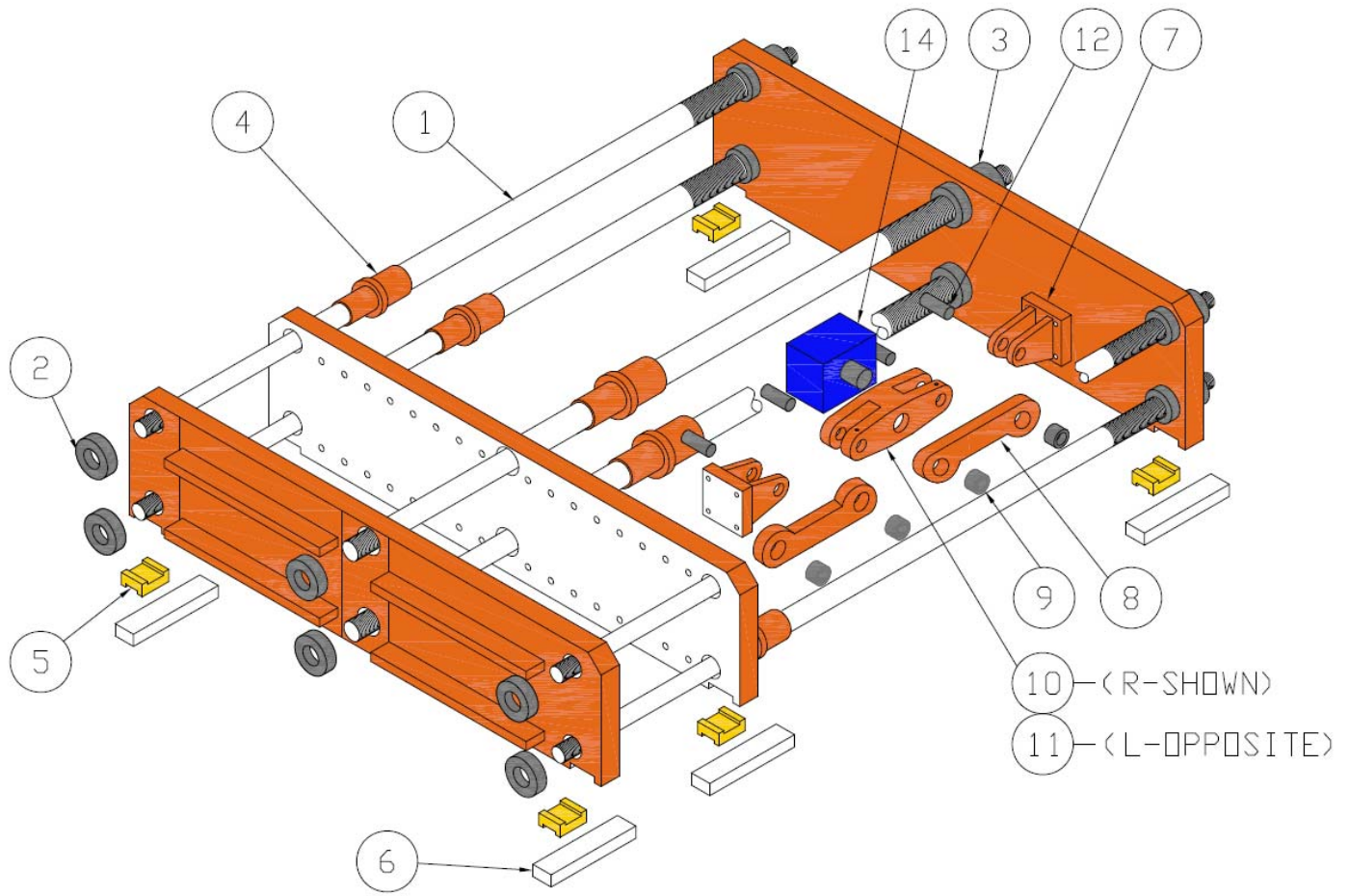
Item	Adrian	OEM	Description	Qty.
1	443079	882947	Tie Bar, 2"	4
2	135590	320079	Nylock Hex Nut	4
3	443074	882948	Tie Bar Nut, 2" Calibrated – Rear Adjusting	8
4	490811	879533	Tie Bar Nut, 2.5" Calibrated – Rear Adjusting	6
5	443078	882945	Tie Bar, 2.5"	2
6	416146	831381	Tie Bar Bushing Retainer Assembly, 2"	4
7	496539	871027	Tie Bar Bushing Retainer Assembly, 2.5"	2
8	476338	841225	Split Bushing	6
9	430707	829494	Platen Shoe	6
10	490778	879445	Platen Shoe, Guided	3
11	431933	823722	Platen Rail	9
12	476326	841261	Clevis	8
13	476323	841262	Toggle Link	8
14	268532	615026	Toggle Bearing	16
15	476380	841259	Rotac Adapter Arm, RH	1
16	476325	841260	Rotac Adapter Arm, LH	1
17	476321	841263	Toggle Pin	16
18	476479	841847	Center Rotac Adapter (Not Shown)	1
19	438562	825016	Clamp Rotac, MPJ-63-2V Oil	2
20	PL-90636	*****	Fastener & Grease Fitting Kit (Not Shown)	1
21	91098	*****	2" Spanner Wrench (Not Shown)	1
22	91068	*****	2.5" Spanner Wrench (Not Shown)	1



**Note: Call for Reconditioned Platens Quote**

## 15x28.5 Dbl Heavy Duty Clamp Layout

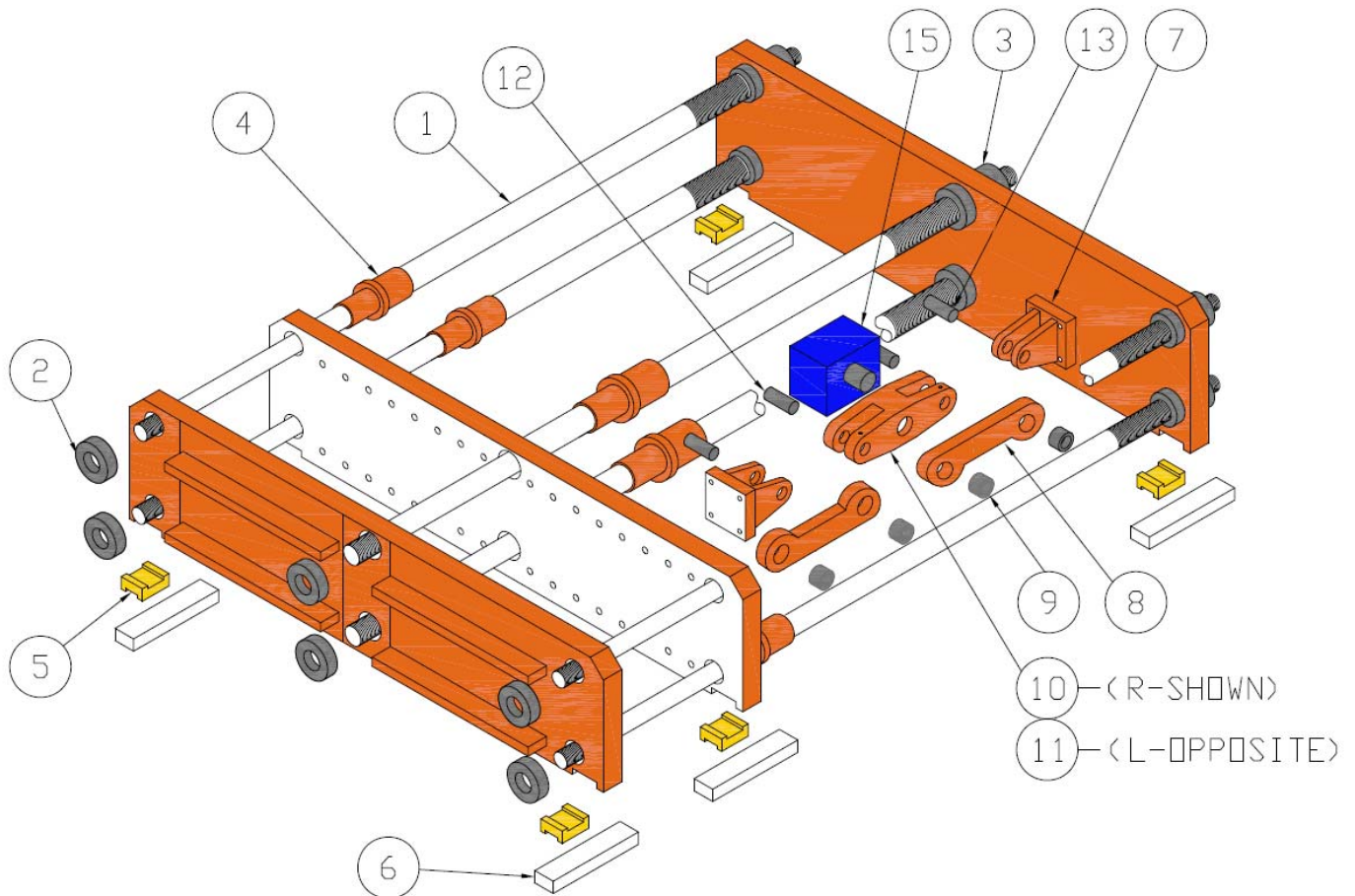
Item	Adrian	OEM	Description	Qty.
1	443078	882945	Tie Bar, 2.5"	6
2	448507	885094	Tie Bar Nut with Mounting Holes, 2.5"	4
3	490811	879533	Tie Bar Nut, 2.5" Calibrated Rear Adjusting	14
4	496539	871027	Tie Bar Bushing Retainer Assembly, 2.5"	6
5	496560	871019	Platen Shoe	6
6	494409	878897	Platen Rail	9
7	476326	841261	Clevis	8
8	476323	841262	Toggle Link	8
9	268532	615026	Toggle Bearing	16
10	476380	841259	Rotac Adapter Arm, RH	1
11	476325	841260	Rotac Adapter Arm, LH	1
12	476321	841263	Toggle Pin	16
13	497458	874805	Center Rotac Adapter (Not Shown)	1
14	438562	825016	Clamp Rotac, MPJ-63-2V Oil	2
15	PL-90640	*****	Fastener & Grease Fitting Kit (Not Shown)	1
16	91068	*****	Spanner Wrench 2.5" (Not Shown)	1



**Note: Call for Reconditioned Platens Quote**

## 15x28.5 Dbl Heavy Duty Clamp Layout – Heavy Duty Linkage (FFW)

Item	Adrian	OEM	Description	Qty.
1	443078	882945	Tie Bar, 2.5"	6
2	448507	885094	Tie Bar Nut with Mounting Holes, 2.5"	4
3	490811	879533	Tie Bar Nut, 2.5" Calibrated Rear Adjusting	14
4	91017	*****	Sealed Tie Bar Bushing Retainer Assembly, 2.5"	6
5	496560	871019	Platen Shoe	6
6	494409	878897	Platen Rail	6
7	91035	*****	Heavy Duty Clevis (FFW)	8
8	476323	841262	Toggle Link	8
9	268532	615026	Toggle Bearing	16
10	91034	*****	Heavy Duty Rotac Adapter Arm, RH (FFW)	1
11	91033	*****	Heavy Duty Rotac Adapter Arm, LH (FFW)	1
12	91036	*****	Heavy Duty Rotac Adaptor Pin (FFW)	8
13	91037	*****	Heavy Duty Toggle Pin (FFW)	8
14	497458	874805	Center Rotac Adapter (Not Shown)	1
15	438562	825016	Clamp Rotac, MPJ-63-2V OIL	2
16	PL-90640	*****	Fastener & Grease Fitting Kit (Not Shown)	1
17	91068	*****	Spanner Wrench 2.5" (Not Shown)	1

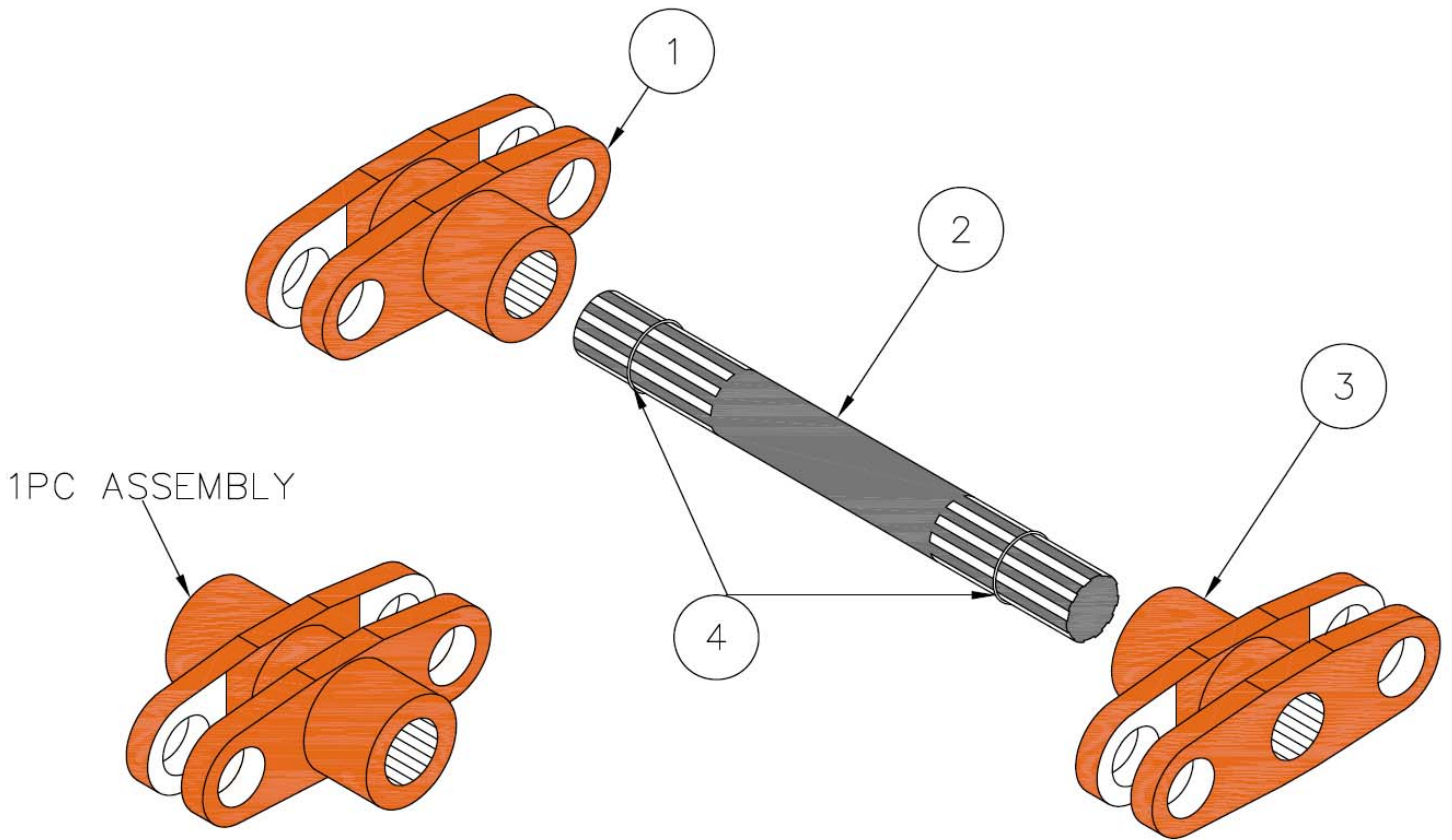


**Note: Call for Reconditioned Platens Quote**

### 3pc Center Rotac Adapter Assembly

Item	Adrian	Description	Qty.
1	497458-3	LH Arm, Center Adapter	1
2	TBD	Center Shaft	1
3	497458-2	RH Arm, Center Adapter	1
4	795571	Snap Ring	2

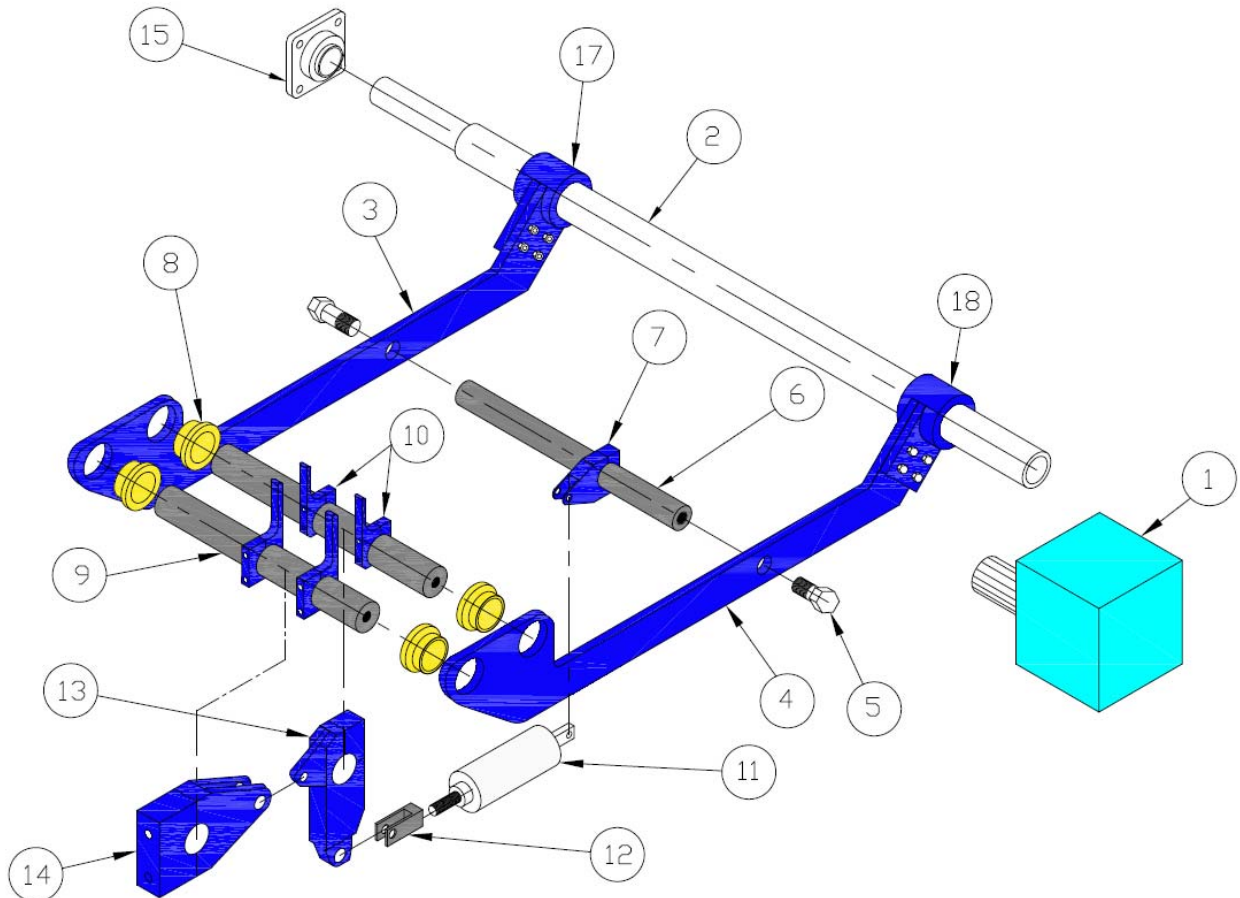
Adrian	OEM	Reference
476479	841847	15 x 27 DBL Clamp Assembly
497458	874805	15 x 28.5 Dbl Clamp Assembly
661777	113444	21 x 36.5 Dbl Clamp Assembly
476871	841543	15 x 44 Clamp Assembly (1 Pc. Design Only)





## Light Weight Aluminum Swing Arm Assembly

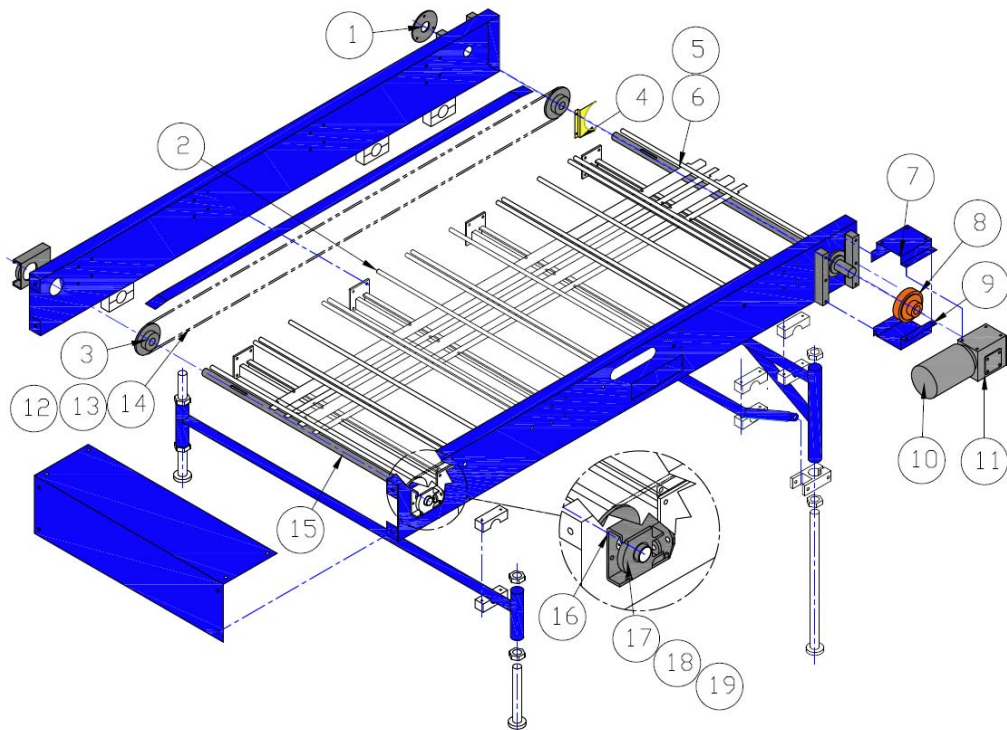
Item	Adrian	OEM	Description	Qty.
1	6395561	1270013	Swing Arm Rotac, MPJ-34-2V (Heavy Duty)	1
2	TBD	*****	Swing Arm Shaft	1
3	90360	*****	Swing Arm Assembly, RH	1
4	90352	*****	Swing Arm Assembly, LH	1
5	375556	240001	1-14 x 1 1/2 Hex Head Cap Screw	2
6	TBD	TBD	Spreader Shaft	1
7	471889-2	843557	2pc Aluminum Cylinder Mounting Bracket	1
8	471880	843559	Bushing (Included with 90360 & 90352)	4
9	TBD	TBD	Finger Shaft (with 1/4" or 3/8" NPT tapped holes)	2
10	446932	881726	Aluminum Finger, 4 pcs / Mold	4
11	6365551	1210003	Flairline Cylinder, 1.5" Bore x 1" Stroke	1
12	6368553	1215002	Rod Clevis & Pin Assembly	1
13	471821-2	843563	2pc Aluminum Actuating Bracket	1
14	471827-2	843564	2pc Aluminum Pivot Bracket	1
15	295558	670005	Flange Bearing	1
16	795575	470040	Snap Ring (Not Shown)	4
17	90351	*****	Swing Arm Fitting End, RH (Included with 90360)	1
18	90359	*****	Swing Arm Fitting End, LH (Included with 90352)	1





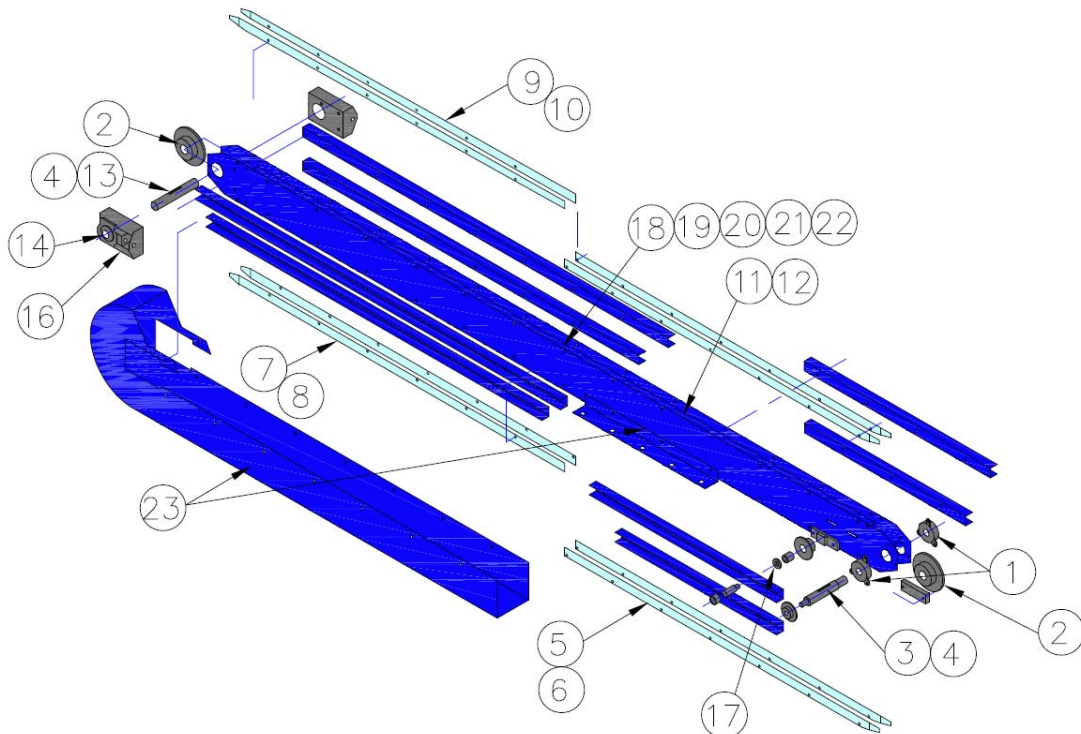
## Cooling Bed Assembly / Standard 8' Length

Item	Adrian	OEM	Description	Qty.
1	295511	670033	Flange Bearing	2
2	TBD	*****	Pusher Rod (Based on Cooling Bed Width)	*
3	472740	846489	Sprocket w/ 1.25" Bore & Keyway, 2052B17	4
4	635623	120162	Sprocket Guard	4
5	3956989	2701757	Key for Drive & Idler Shaft	4
6	TBD	*****	Drive Shaft (Based on Cooling Bed Width)	1
7	472701	846493	Gearbox Bracket, Upper	1
8	775551	440003	Dalton Clutch w/ 1" Bore	1
9	472707	846494	Gearbox Bracket, Lower	1
10	3555598	2000075	Motor – 1/3 HP, 1725 RPM, 3PH / 60HZ	1
11	738514	425038	Gear Reducer	1
12	765656	410101	Roller Chain, 2052 (10' per Box)	4
13	765671	410143	Master Link, 2052	2
14	765677	410144	Offset Link, 2052	2
15	TBD	*****	Idler Shaft (Based on Cooling Bed Width)	1
16	413344	832288	Take-up Frame	2
17	295554	670008	Take-up Bearing	2
18	3950277	2709644	Threaded Rod, 3/4 - 10 x 4" Long	2
19	138530	325029	Hex Jam Nut, 3/4 – 10	8
20	478493	845872	Sprocket w/ 3.5" Bore, 40A60 (Not Shown)	1
21	765558	410005	Sprocket, 409 5/8 (Not Shown)	1
21	765555	410000	Roller Chain, 40 / 10' per box (Not Shown)	1
22	765618	410135	Master Link, 40 (Not Shown)	1
23	765612	410136	Offset Link, 40 (Not Shown)	1
24	TBD	*****	Live Roller (Based on Cooling Bed Width)(Not Shown)	1



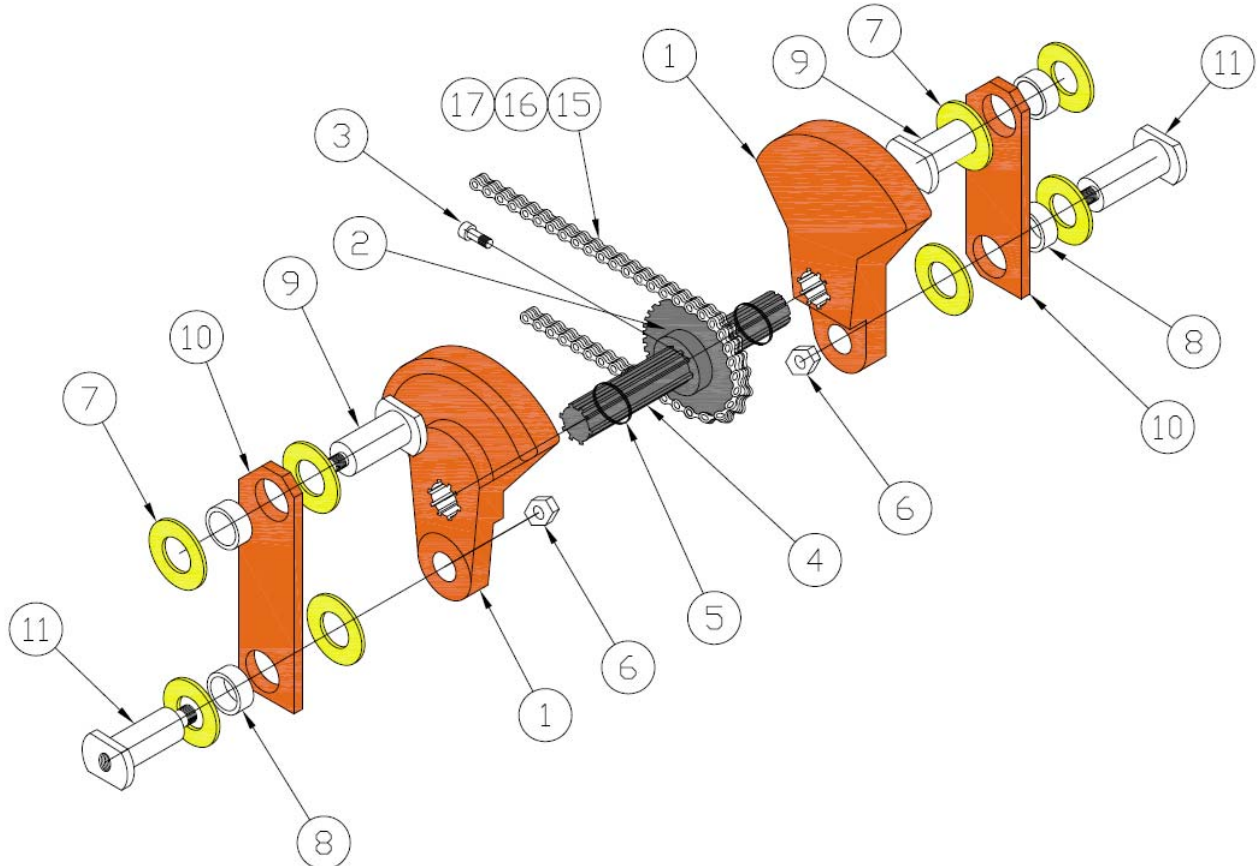
## Trimmer Conveyor Frame / Model 10039 - 10041

Item	Adrian	OEM	Description	Qty.
1	295521	670063	Flange Bearing	2
2	472197	846374	Sprocket, Tapered w/ 1.25 Bore	2
3	472660	846119	Drive Shaft	1
4	795573	470042	Spirolox, Snap Ring	4
5	654927	108764	Rail, Exit End Opposite (10039 or 10040)	2
6	652443	106882	Rail, Exit End (10039 or 10040)	2
7	654923	108762	Rail, Load End Opposite (10039 only)	2
8	652494	106878	Rail, Load End (10039 only)	2
9	654921	108763	Rail, Load End Opposite (10040 only)	2
10	652445	106880	Rail, Load End (10040 only)	2
11	765332	410226	Roller Chain (10039) (Not Shown)	20'
12	765532	410026	Roller Chain (10040) (Not Shown)	24'
13	472688	846155	Idler Shaft	1
14	295554	670008	Take-up Bearing	2
15	345518	280035	Rail Keeper (T-Nut) (Not Shown)	60
16	413344	832288	Take-up Frame	2
17	430554	829008	Idler Stud	1
18	472673	846142	Bucket Carrier, 8" OC / Gallon (Not Shown)	TBD
19	91422	*****	Gallon Bucket, Urethane (Not Shown)	TBD
20	472673	846142	Bucket Carrier, 6" OC / Half-Gallon (Not Shown)	TBD
21	91306	*****	Half Gallon Bucket, Urethane (Not Shown)	TBD
22	158666	305111	Roll Pin (2 per Carrier) (Not Shown)	TBD
23	TBD	*****	Load Beam and Lower Guard (based on Model)	TBD



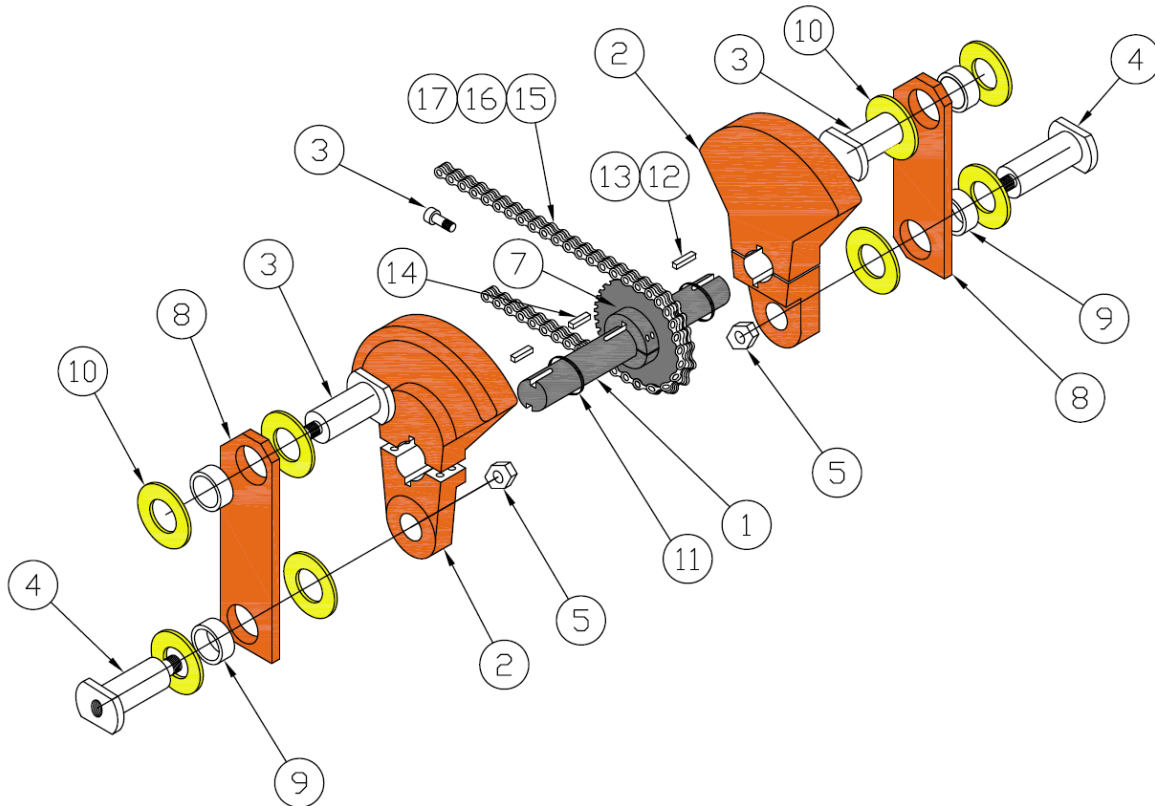
## Trimmer Platen Drive Assembly with Spline Shaft - Models 10039 - 10041

Item	Adrian	OEM	Description	Qty.
1	413304	832298	Crank Counter Weights (Matched Set)	1
2	430765	829410	Driven Sprocket, D50	1
3	360552	219006	1/4 – 20 x 3/4 Socket Set Screw	1
4	472616	846131	Crank Shaft	1
5	795571	470043	Snap Ring	2
6	138515	325030	3/4 – 16 Jam Nut	2
7	275516	640031	Thrust Washer	8
8	268530	615029	Bearing	4
9	430678	829415	Link Pin	2
10	413308	832295	Link	2
11	430565	829010	Crank Pin	2
12	765564	410018	Drive Sprocket, D50P21 (Not Shown)	1
13	90512	*****	Bushing, P1 x 1.25" (Not Shown)	1
14	785557	450004	Idler Sprocket, D50B17	1
15	765692	410176	Roller Chain, 50-2	1
16	765610	410139	Master Link, 50-2	1
17	765675	410140	Offset Link, 50-2	1
18	90166	*****	Hub, 1.50" (for Ferguson Gearbox) (Not Shown)	1
19	90167	*****	Hub, 1.25" (for Geneva Gearbox) (Not Shown)	1



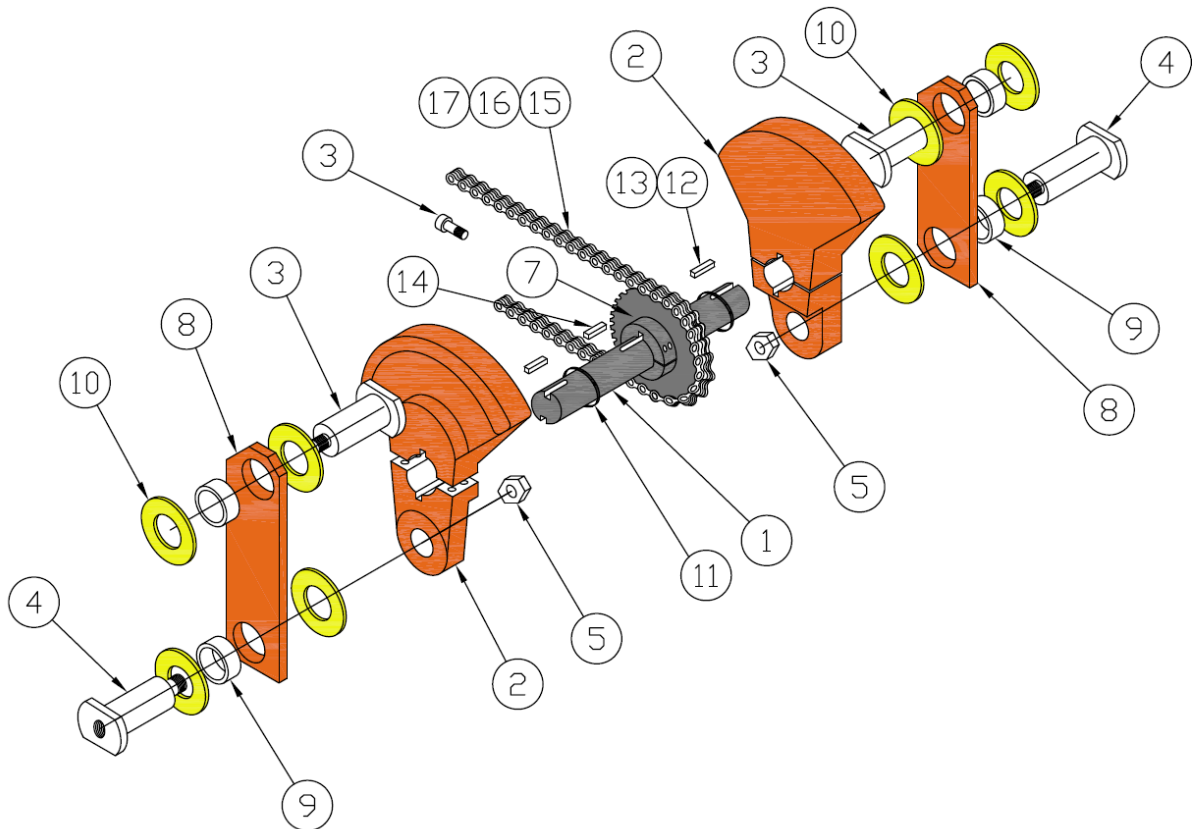
**Trimmer Platen Drive Upgrade – Assembly No. 90031-60  
Double Keyed Shaft, Split Crank & Double 60 Chain Retrofit**

Item	Adrian	OEM	Description	Qty.
1	635092	120976	Crank Shaft, Double Keyed	1
2	635098	120975	Split Crank Counter Weights	2
3	430768	829415	Link Pin	2
4	430565	829010	Crank Pin	2
5	138515	325030	3/4 – 16 Jam Nut	4
6	295593	670072	Flange Bearing (Not Shown)	2
7	632628	126165	Driven Sprocket, Split D-60 w/ SHCS	1
8	413308	832295	Link	2
9	268530	615029	Bearing	4
10	275516	640031	Thrust Washer	8
11	795571	470043	Snap Ring	2
12	636390	121279	Key	4
13	*****	*****	10 – 32 x 3/4 FHCS	4
14	90138	*****	Key	2
15	765670	410149	Roller Chain, 60-2 – 10' / Box	1
16	765135	410320	Master Link, 60-2	1
17	765157	410304	Offset Link, 60-2	1
18	765732	410426	Drive Sprocket, D60 (Not Shown)	1
19	90166	*****	Hub, 1.50" (for Ferguson Gearbox) (Not Shown)	1
20	90167	*****	Hub, 1.25" (for Geneva Gearbox) (Not Shown)	1
21	785582	450056	Idler Sprocket, D60 (Not Shown)	1



**Trimmer Platen Drive Upgrade – Assembly No. 90031-50  
Double Keyed Shaft, Split Crank & Double 50 Chain Retrofit**

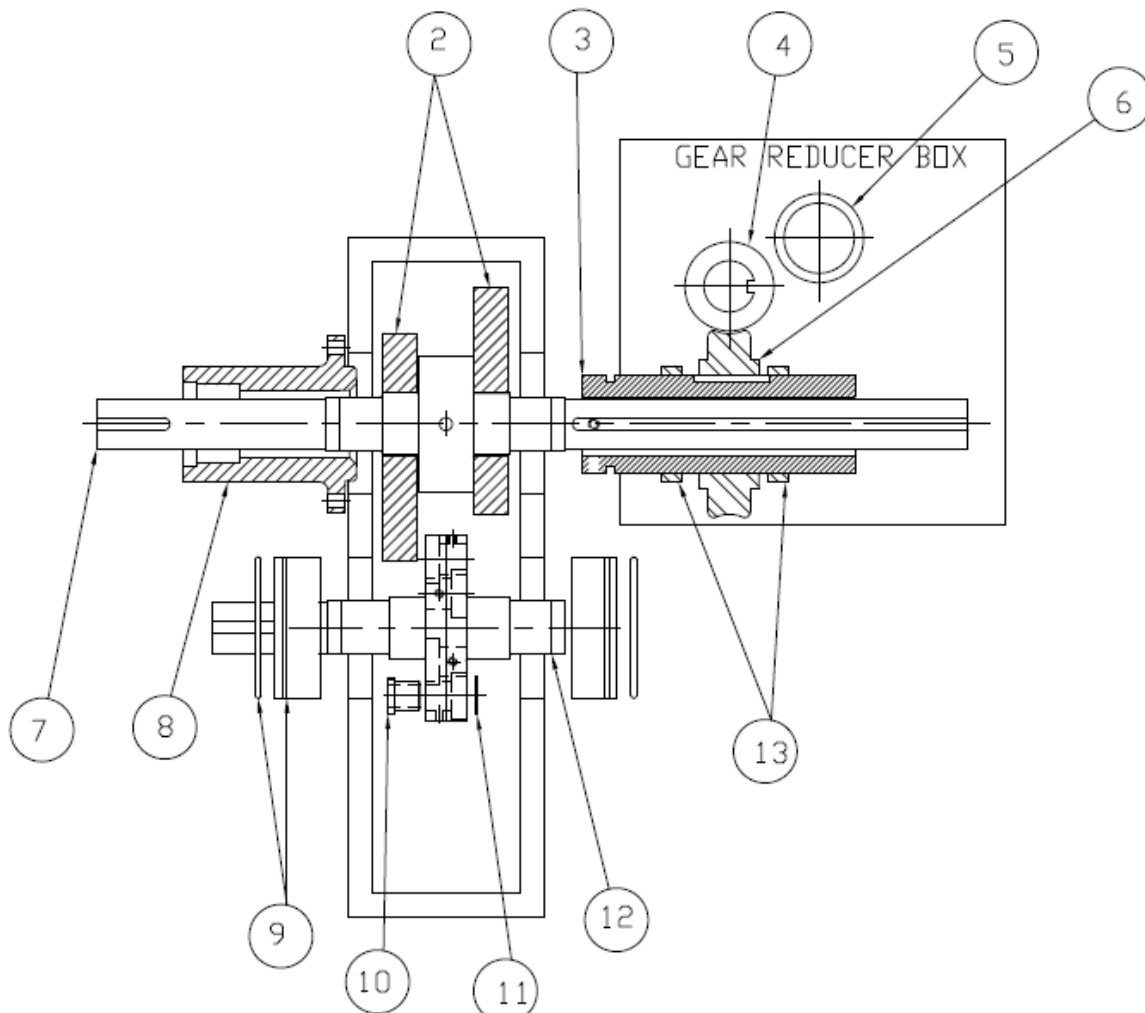
Item	Adrian	OEM	Description	Qty.
1	635092	120976	Crank Shaft, Double Keyed	1
2	635098	120975	Split Crank Counter Weights	2
3	430768	829415	Link Pin	2
4	430565	829010	Crank Pin	2
5	138515	325030	3/4 – 16 Jam Nut	4
6	295593	670072	Flange Bearing (Not Shown)	2
7	635099	120977	Driven Sprocket, Split D-50 w/ SHCS	1
8	413308	832295	Link	2
9	268530	615029	Bearing	4
10	275516	640031	Thrust Washer	8
11	795571	470043	Snap Ring	2
12	636390	121279	Key	4
13	*****	*****	10 – 32 x 3/4 FHCS	4
14	90138	*****	Key	2
15	765692	410176	Roller Chain, 50-2 – 10' / Box	1
16	765610	410139	Master Link, 50-2	1
17	765675	410140	Offset Link, 50-2	1
18	90289	*****	Drive Sprocket, D50Q24 (Not Shown)	1
19	90166	*****	Hub, 1.50" (for Ferguson Gearbox) (Not Shown)	1
20	90167	*****	Hub, 1.25" (for Geneva Gearbox) (Not Shown)	1
21	785557	450004	Idler Sprocket, D50 (Not Shown)	1





## PL-90949 Ferguson Index Drive & Reducer Assembly

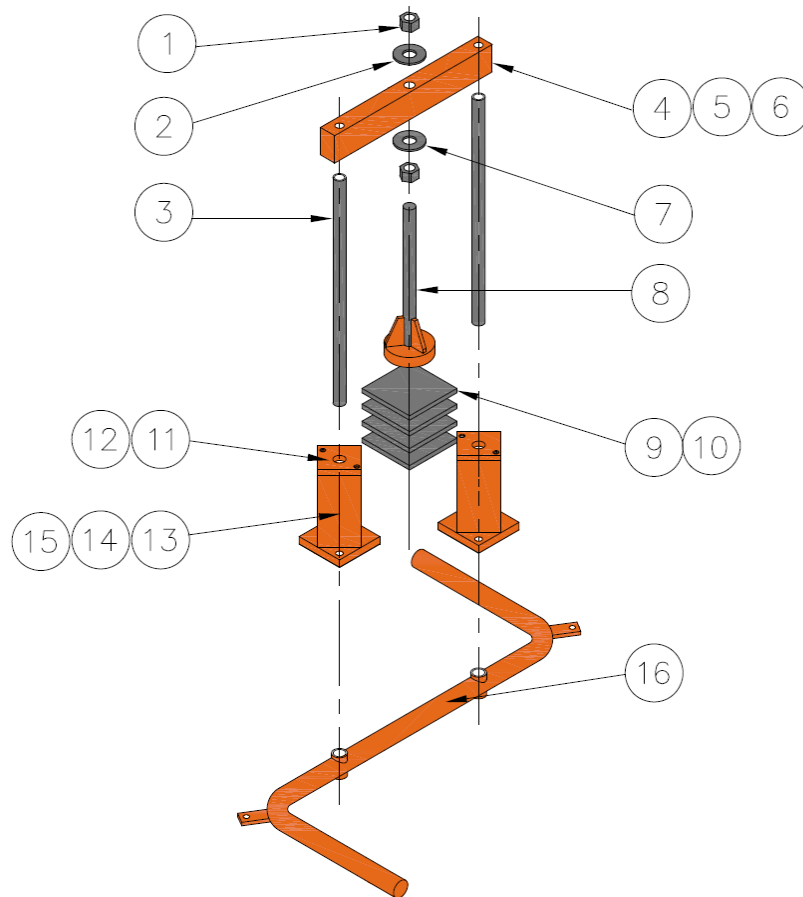
Item	Adrian	Description	Qty.
1	PL-90950	Seal & Bearing Kit (not shown)	1
2	90916	Cams	2
3	90940	Shaft Sleeve	1
4	90952	Worm Shaft	1
5	90956	Shim, Worm Shaft	1
6	90951	Worm Gear, Bronze	1
7	90302	Output Cam Shaft	1
8	90939	Shaft Housing	1
9	90959	Eccentric Bearing	2
10	90942	Eccentric Cam Bushing	6
11	90935	Hardened Washer	6
12	90931	Output Cam Follower Shaft	1
13	90955	Spacer for Reducer	2



**Ferguson Model: P500**  
**Drive Code: P5-3-FM150-130**

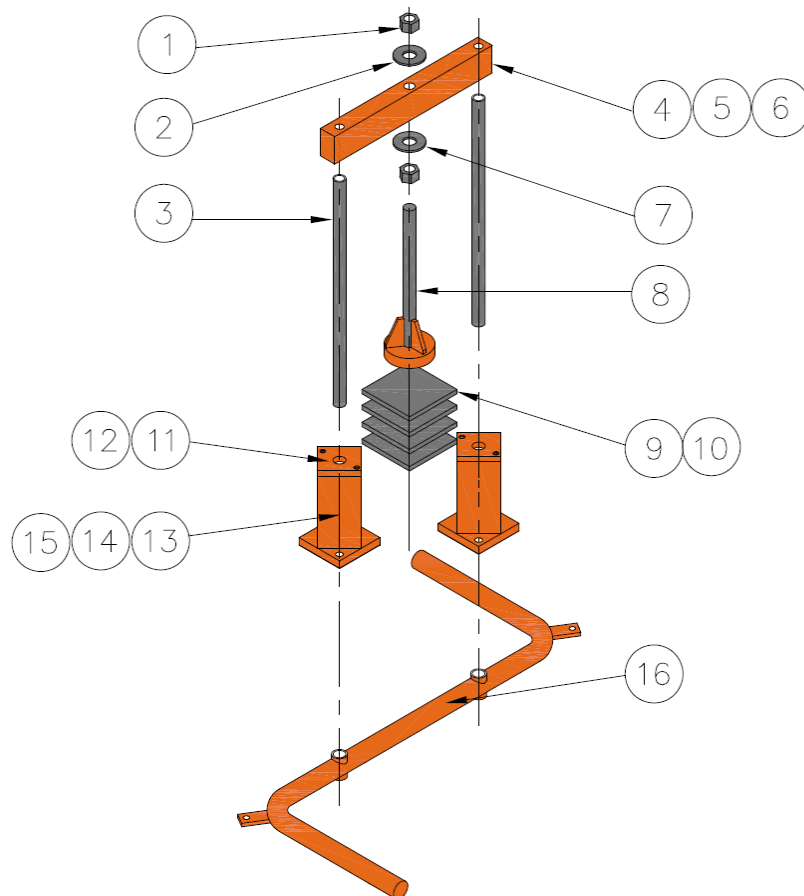
## "S" Bar Assembly – Model 10026

Item	Adrian	OEM	Description	Qty.
1	138515	325030	3/4 – 16 Jam Nut Hex	2
2	188565	355010	3/4 Flat Washer	2
3	443483	882852	Guide Rod	2
4	481098	853975	Cross Bar	1
5	185563	350012	1/2 Lock Washer	2
6	360551	219003	1/2 – 13 x 1 1/2 SHCS	2
7	185567	350014	3/4 Lock Washer	2
8	481045	853980	Stop Rod, Upper	1
9	481046	853981	Stop Pad	4
10	155562	300016	.500 x 1 Shoulder Screw	1
11	443470	882849	Cap	2
12	365514	210038	10 – 32 x 1/2 SHCS	4
13	443485	882850	Bushing Housing	2
14	441580	883059	Spacer	2
15	225556	660001	Bushing	4
16	443477	882844	"S" Bar	1
17	91464	-----	Container Guide (Not Shown)	1



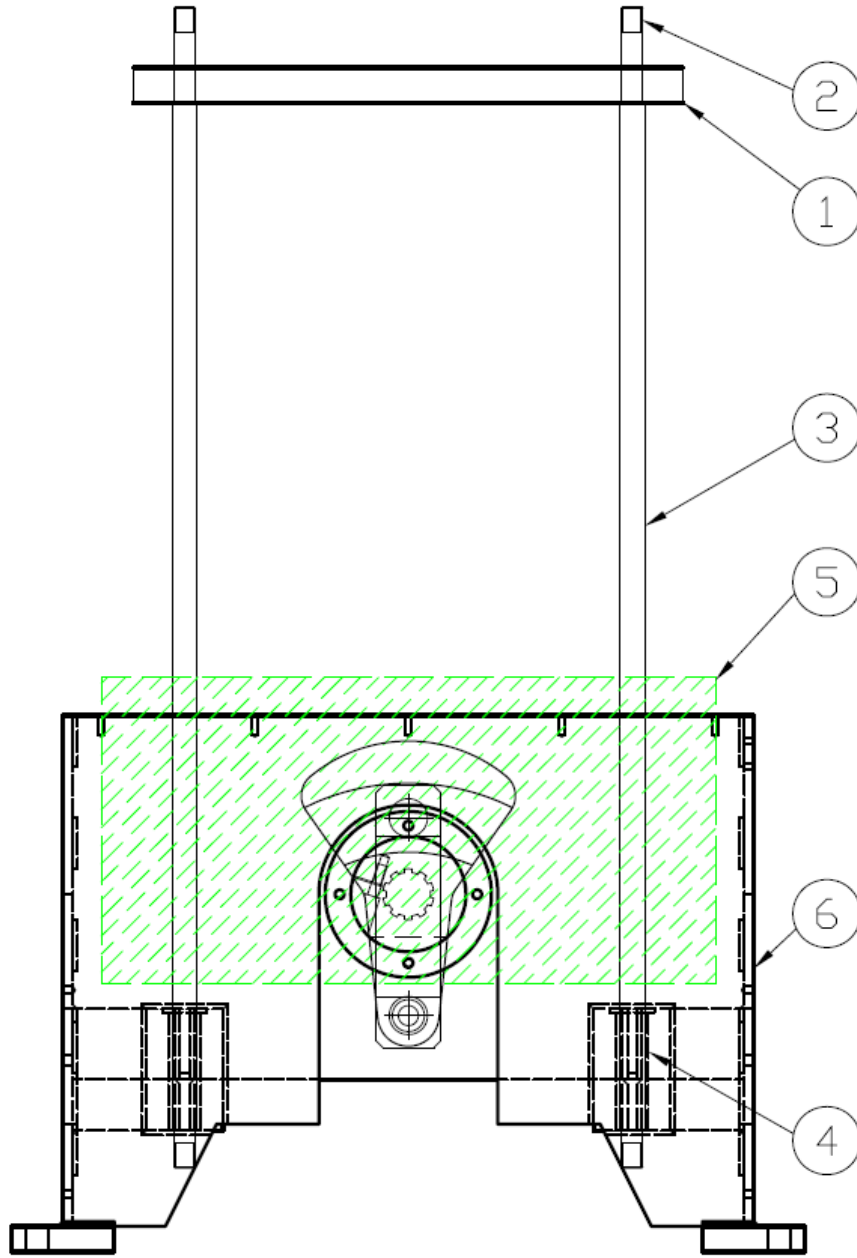
## "S" Bar Assembly – Model 10039 - 10041

Item	Adrian	OEM	Description	Qty.
1	138515	325030	3/4 – 16 Jam Nut Hex	2
2	188565	355010	3/4 Flat Washer	2
3	481092	853976	Guide Rod	2
4	481098	853975	Cross Bar	1
5	185563	350012	1/2 Lock Washer	2
6	360551	219003	1/2 – 13 x 1 1/2 SHCS	2
7	185567	350014	3/4 Lock Washer	2
8	481045	853980	Stop Rod, Upper	1
9	481046	853981	Stop Pad	4
10	155562	300016	.500 x 1 Shoulder Screw	1
11	481099	853977	Cap	2
12	378533	245022	1/4 – 20 x 5/8 BHCS	8
13	487306	854291	Bushing Housing	2
14	487305	854290	Spacer	2
15	225556	660001	Bushing	4
16	487342	854286	"S" Bar	1
17	91221	-----	"S" Bar (Solid Aluminum Upgrade – Not Shown)	1
18	487349	854287	Container Guide (Not Shown)	1



## Trimmer Base Assembly – Models 10039 - 10041

Item	Adrian	OEM	Description	Qty.
1	472639	846127	Upper Platen	1
2	138519	325037	Hex Jam Nut, 1 1/4" - 7	8
3	472630	846129	Guide Rod (Tie Bar)	4
4	225558	660005	Ball Bushing	8
5	472659	846157	Lower Platen, Aluminum	2
6	91001	*****	Trimmer Base	1



**Both Traditional and Extended Beam Lengths available**