



ADRIANTOOL
CORPORATION

HYDRAULIC FITTING CATALOG

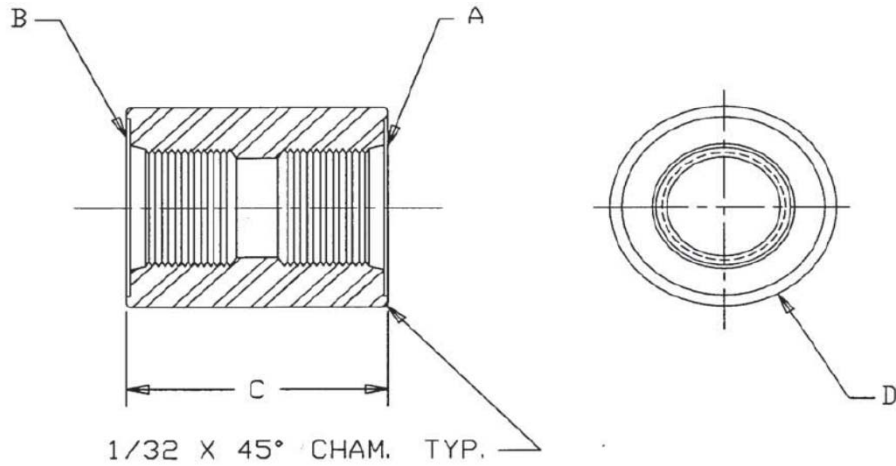


EXPERIENCE PRECISION QUALITY

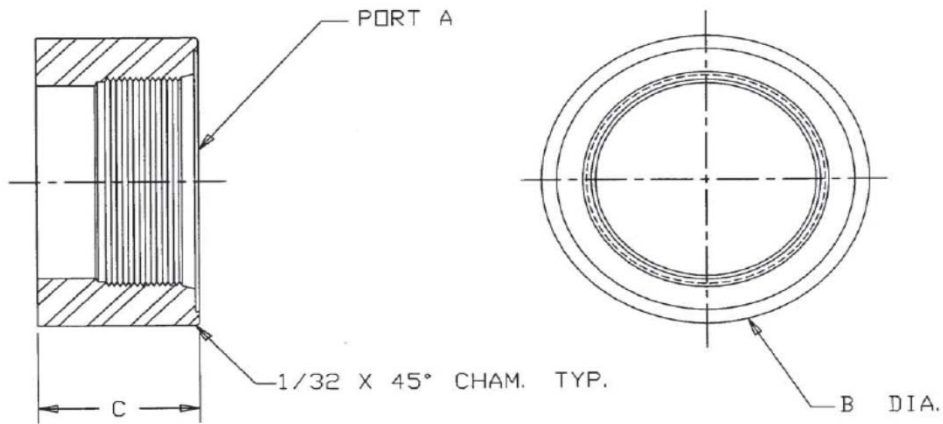
ATC offers a complete off-the-shelf line of high-pressure hydraulic fittings and couplings. We manufacture wide assortments of Straight Thread Tee's, Socket Weld Couplings, SAE-to-Pipe Couplings, NPT Couplings, and more.

TABLE OF CONTENTS

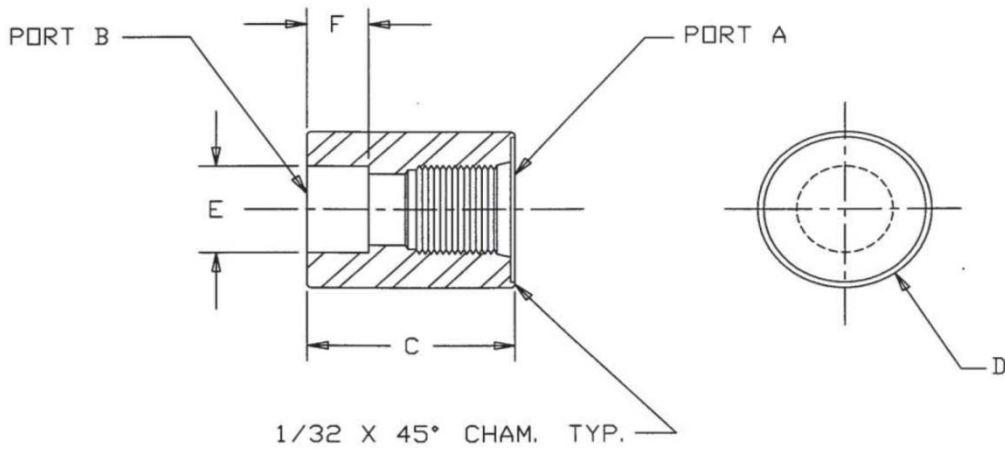
SAE FULL COUPLING.....	PAGE 1
SAE HALF COUPLING.....	PAGE 2
SOCKET WELD COUPLING.....	PAGE 3
SAE TO PIPE COUPLING.....	PAGE 4
NPTF PIPE/SOCKET WELD FULL COUPLING.....	PAGE 5
ISO 6149-1 / SAE J1926 COUPLING.....	PAGE 6
ISO 6149-1 COUPLING.....	PAGE 7
ISO 6149-1 / NPT COUPLING.....	PAGE 8
ISO 6149-1 HALF COUPLING.....	PAGE 9
SAE – BSPT COUPLING.....	PAGE 10
NPT-BSPP HALF COUPLING.....	PAGE 11
BSPP FULL COUPLING.....	PAGE 12
BSPP FULL COUPLING (BSPP X 2).....	PAGE 13
BSPP NPT FULL COUPLING.....	PAGE 14
BSPP HALF COUPLING.....	PAGE 15
SHORT PROJECTION HALF COUPLING.....	PAGE 16
STRAIGHT THREAD UNION.....	PAGE 17
STRAIGHT THREAD TEE.....	PAGE 18



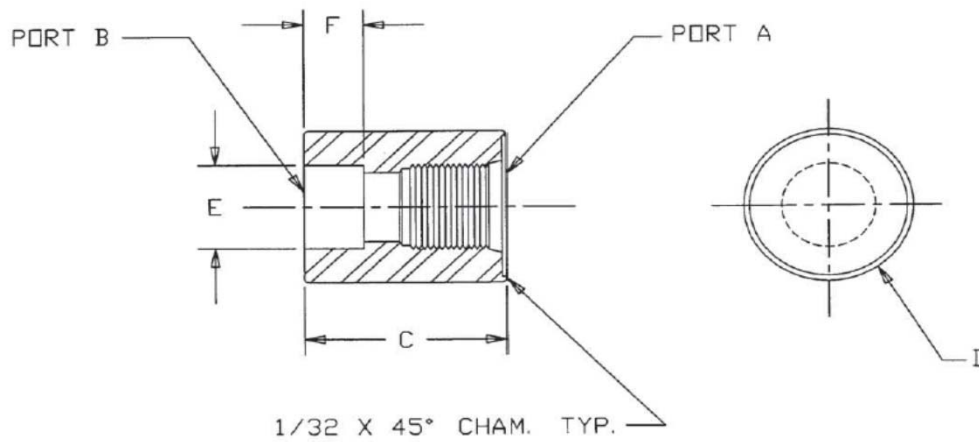
PART NO.	S.A.E. STRIGHT THD.		DIMENSIONS		SAE DASH NO.
	A	B	C	D	
ATC-09-02	9/16" - 18	9/16" - 18	1.38	1.00	-6
ATC-09-03	3/4" - 16	3/4" - 16	1.50	1.25	-8
ATC-09-04	7/8" - 14	7/8" - 14	1.75	1.50	-10
ATC-09-05	1-1/16" - 12	1-1/16" - 12	2.00	1.75	-12
ATC-09-06	1-3/16" - 12	1-3/16" - 12	2.00	1.88	-14
ATC-09-07	1-5/16" - 12	1-5/16" - 12	2.00	2.00	-16
ATC-09-08	1-5/8" - 12	1-5/8" - 12	2.50	2.50	-20
ATC-09-09	1-7/8" - 12	1-7/8" - 12	2.50	2.62	-24
ATC-09-10	2-1/2" - 12	2-1/2" - 12	2.75	3.50	-30
ATC-09-11	9/16" - 18	3/4" - 16	1.50	1.25	
ATC-09-12	3/4" - 16	7/8" - 14	1.75	1.50	
ATC-09-13	7/8" - 14	1-1/16" - 12	2.00	1.75	
ATC-09-14	1-1/16" - 12	1-5/16" - 12	2.00	2.00	
ATC-09-15	1-5/16" - 12	1-5/8" - 12	2.50	2.50	
ATC-09-16	1-5/8" - 12	1-7/8" - 12	2.50	2.62	
ATC-09-17	3/4" - 16	1-1/16" - 12	2.00	1.75	
ATC-09-18	1-7/8" - 12	2-1/2" - 12	2.75	3.50	



PART NO.	THREAD	DIMENSIONS	
	A	B	C
ATC-13-02	7/16" - 20	0.88	0.75
ATC-13-03	1/2" - 20	1.00	0.75
ATC-13-04	9/16" - 18	1.00	0.75
ATC-13-05	3/4" - 16	1.25	0.75
ATC-13-06	7/8" - 14	1.50	0.75
ATC-13-07	1-1/16" - 12	1.75	0.88
ATC-13-08	1-3/16" - 12	1.88	1.00
ATC-13-09	1-5/16" - 12	2.00	1.00
ATC-13-10	1-5/8" - 12	2.50	1.25
ATC-13-11	1-7/8" - 12	2.62	1.25
ATC-13-12	2-1/2" - 12	3.50	1.38

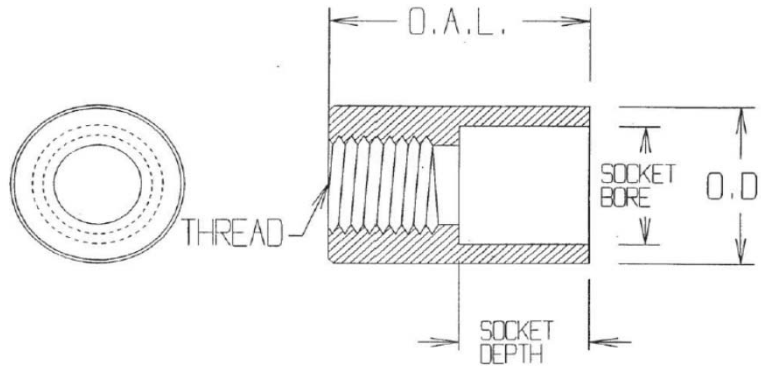


PART NO.	S.A.E. STRAIGHT THD.		DIMENSIONS			
	A	B	C	D	E	F
ATC-23-02	9/16" - 18	1/4"	1.00	1.00	0.555	0.38
ATC-23-03	3/4" - 16	3/8"	1.50	1.25	0.690	0.44
ATC-23-04	7/8" - 14	1/2"	1.75	1.50	0.855	0.50
ATC-23-05	1-1/16" - 12	3/4"	2.00	1.75	1.065	0.56
ATC-23-06	1-3/16" - 12	3/4"	2.00	2.00	1.065	0.56
ATC-23-07	1-5/16" - 12	1"	2.37	2.00	2.330	0.62
ATC-23-08	1-5/8" - 12	1-1/4"	2.50	2.50	1.675	0.69
ATC-23-09	1-7/8" - 12	1-1/2"	2.50	2.62	1.915	0.75
ATC-23-10	2-1/2" - 12	2"	2.75	3.50	2.406	0.88
ATC-23-11	3/4" - 16	1/2"	1.50	1.75	0.855	0.50



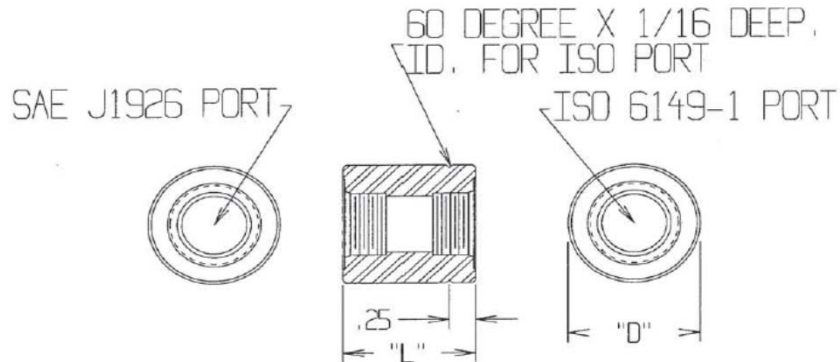
PART NO.	S.A.E. STRAIGHT THD.		DIMENSIONS	
	A	B	C	D
ATC-38-01	7/16" - 20	1/8" NPTF	0.75	1.00
ATC-38-02	1/2" - 20	1/4" NPTF	1.00	1.25
ATC-38-03	9/16" - 18	3/8" NPTF	1.00	1.38
ATC-38-04	3/4" - 16	1/2" NPTF	1.25	1.50
ATC-38-05	7/8" - 16	1/2" NPTF	1.50	1.75
ATC-38-06	1-1/16" - 12	3/4" NPTF	1.75	2.00
ATC-38-07	1-5/16" - 12	1" NPTF	2.00	2.38
ATC-38-08	1-5/8" - 12	1-1/4" NPTF	2.50	2.62
ATC-38-09	1-7/8" - 12	1-1/2" NPTF	2.62	2.75
ATC-38-10	2-1/2" - 12	2" NPTF	3.50	3.50

NPTF PIPE / SOCKET WELD FULL COUPLING



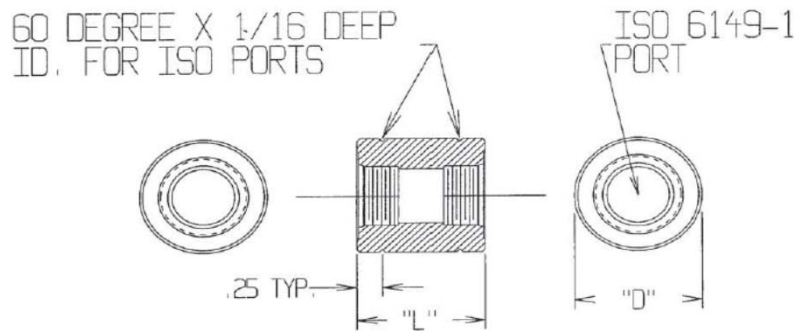
PART NO.	THREAD	O.D.	O.A.L.	PIPE SIZE	SOCKET BORE	SOCKET DEPTH
ATC-21-02	1/8					
ATC-21-03	1/4					
ATC-21-04	3/8					
ATC-21-05	1/2	1-1/2	1.75	1/2	.855	0.50
ATC-21-06	3/4					
ATC-21-07	1.00	2.00	2.00	1.00	1.330	0.62
ATC-21-08	1-1/4	2-1/2	2.00	1-1/4	1.675	0.69
ATC-21-09	1-1/2	2-5/8	2.00	1-1/2	1.915	0.75
ATC-21-10	2.00					
ATC-21-11	2-1/2					

ISO 6149-1 / SAE J1926 COUPLING

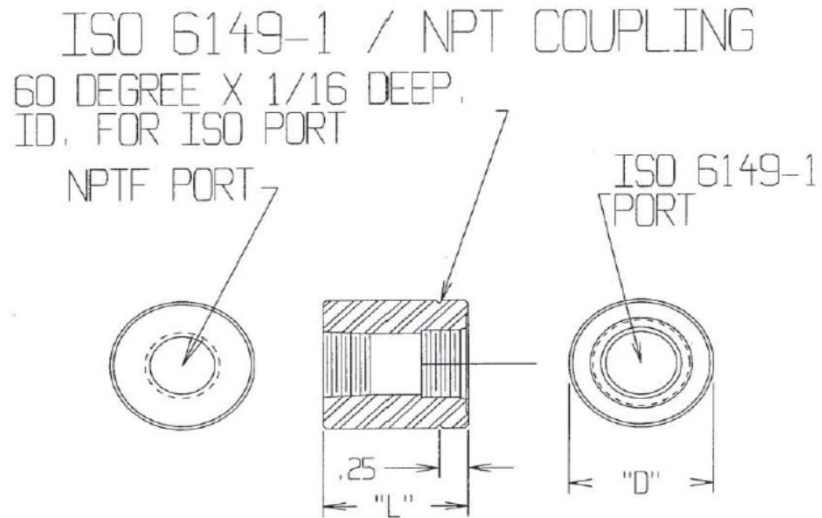


PART NO.	ISO PORT		SAE PORT			D	L
	THREAD	MIN. TREAD LENGTH	PORT NO.	THREAD	MIN. TREAD LENGTH		
ATC-M8-02	M8X1	0.400	# 2	5/16-24	0.390	5/8	7/8
ATC-M10-03	M10X1	0.400	# 3	3/8-24	0.390	3/4	1
ATC-M12-05	M12X1.5	0.460	# 5	1/2-20	0.454	7/8	1-1/4
ATC-M14-06	M14X1.5	0.460	# 6	9/16-18	0.500	1	1-3/8
ATC-M18-08	M18X1.5	0.580	# 8	3/4-16	0.562	1-1/4	1-1/2
ATC-M22-10	M22X1.5	0.625	# 10	7/8-14	0.656	1-1/2	1-3/4
ATC-M27-12	M27X2	0.770	# 12	1-1/16-12	0.750	1-3/4	2
ATC-M33-16	M33X2	0.770	# 16	1-5/16-12	0.750	2-1/4	2-3/8
ATC-M42-20	M42X2	0.790	# 20	1-5/8-12	0.750	2-1/2	2-5/8
ATC-M48-24	M48X2	0.875	# 24	1-7/8-12	0.750	2-5/8	2-3/4
ATC-M60-32	M60X2	0.970	# 32	2-1/2-12	0.750	3-1/2	2-3/4

ISO 6149-1 COUPLING

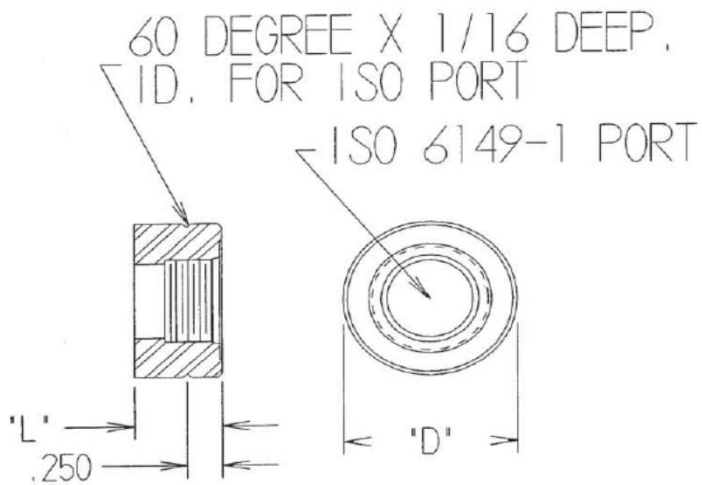


PART NO.	ISO PORT		D	L
	THREAD	MIN. TREAD LENGTH		
ATC-M8-X2	M8 X 1	0.400	5/8	7/8
ATC-M10-X2	M10 X 1	0.400	3/4	1
ATC-M12-X2	M12 X 1.5	0.460	7/8	1-1/4
ATC-M14-X2	M14 X 1.5	0.460	1	1-3/8
ATC-M16-X2	M16 X 1.5	0.510	1-1/4	1-1/2
ATC-M18-X2	M18 X 1.5	0.580	1-1/4	1-1/2
ATC-M22-X2	M22 X 1.5	0.625	1-1/2	1-3/4
ATC-M27-X2	M27 X 2	0.770	1-3/4	2
ATC-M33-X2	M33 X 2	0.770	2-1/4	2-3/8
ATC-M42-X2	M42 X 2	0.790	2-1/2	2-5/8
ATC-M48-X2	M48 X 2	0.875	2-5/8	2-3/4
ATC-M60-X2	M60 X 2	0.970	3-1/2	2-3/4

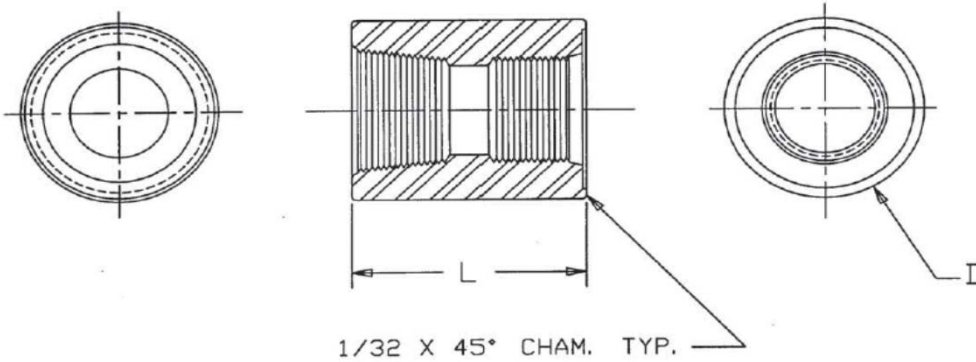


PART NO.	ISO PORT		NPTF		
	THREAD	MIN. TREAD LENGTH	PIPE SIZE	D	L
ATC-M8-102	M8 X 1	0.400	1/8 NPTF	5/8	7/8
ATC-M10-102	M10 X 1	0.400	1/8 NPTF	3/4	1
ATC-M12-104	M12 X 1.5	0.460	1/4 NPTF	7/8	1-1/4
ATC-M14-106	M14 X 1.5	0.460	3/8 NPTF	1	1-3/8
ATC-M16-108	M16 X 1.5	0.510	1/2 NPTF	1-1/4	1-1/2
ATC-M18-108	M18 X 1.5	0.580	1/2 NPTF	1-1/4	1-1/2
ATC-M22-108	M22 X 1.5	0.625	1/2 NPTF	1-1/2	1-3/4
ATC-M27-112	M27 X 2	0.770	3/4 NPTF	1-3/4	2
ATC-M33-116	M33 X 2	0.770	1 NPTF	2-1/4	2-3/8
ATC-M42-120	M42 X 2	0.790	1-1/4 NPTF	2-1/2	2-5/8
ATC-M48-124	M48 X 2	0.875	1-1/2 NPTF	2-5/8	2-3/4
ATC-M60-132	M60 X 2	0.970	2 NPTF	3-1/2	2-3/4

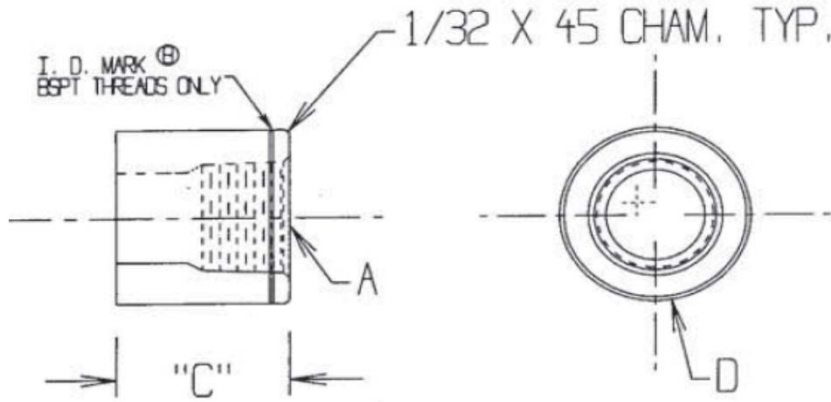
ISO 6149-1 HALF COUPLING



PART NO.	ISO PORT			
	THREAD	MIN. TREAD LENGTH	D	L
ATC-M8HC	M8 X 1	0.400	5/8	3/4
ATC-M10HC	M10 X 1	0.400	3/4	3/4
ATC-M12HC	M12 X 1.5	0.460	7/8	3/4
ATC-M14HC	M14 X 1.5	0.460	1	3/4
ATC-M16HC	M16 X 1.5	0.512	1-1/4	3/4
ATC-M18HC	M18 X 1.5	0.580	1-1/4	3/4
ATC-M22HC	M22 X 1.5	0.625	1-1/2	3/4
ATC-M27HC	M27 X 2	0.770	1-3/4	1
ATC-M33HC	M33 X 2	0.770	2-1/4	1
ATC-M42HC	M42 X 2	0.790	2-1/2	1-1/4
ATC-M48HC	M48 X 2	0.875	2-5/8	1-1/4
ATC-M60HC	M60 X 2	0.970	3-1/2	1-3/8

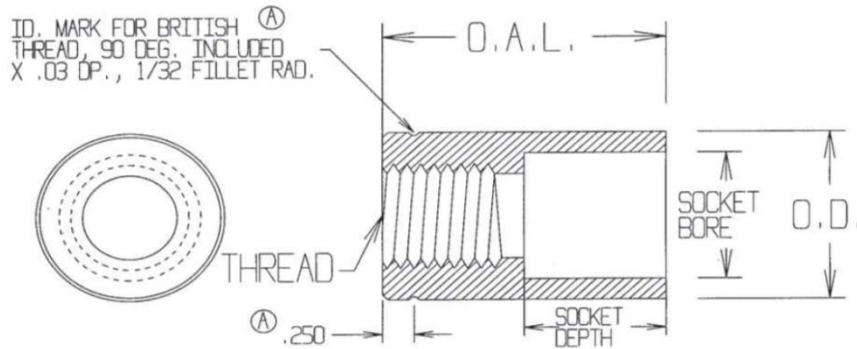


PART NO.	SAE THREAD	BSPT		
			D	L
ATC-42-01	5/16"-24	1/16" BSPT	3/4	3/4
ATC-42-02	3/8"-24	1/8" BSPT	3/4	3/4
ATC-42-03	7/16"-20	1/8" BSPT	3/4	1
ATC-42-04	1/2"-20	1/4" BSPT	1	1
ATC-42-05	9/16"-18	3/8" BSPT	1	1-1/2
ATC-42-06	3/4"-16	1/2" BSPT	1-1/4	1-3/8
ATC-42-07	7/8"-14	1/2" BSPT	1-1/2	1-3/4
ATC-42-08	1-1/16"-12	3/4" BSPT	1-3/4	2
ATC-42-09	1-5/16"-12	1" BSPT	2	2-3/8
ATC-42-10	1-5/8"-12	1-1/4" BSPT	2-1/2	2-5/8
ATC-42-11	1-7/8"-12	1-1/2" BSPT	2-5/8	2-3/4
ATC-42-12	2-1/2"-12	2" BSPT	3-1/2	3-1/2

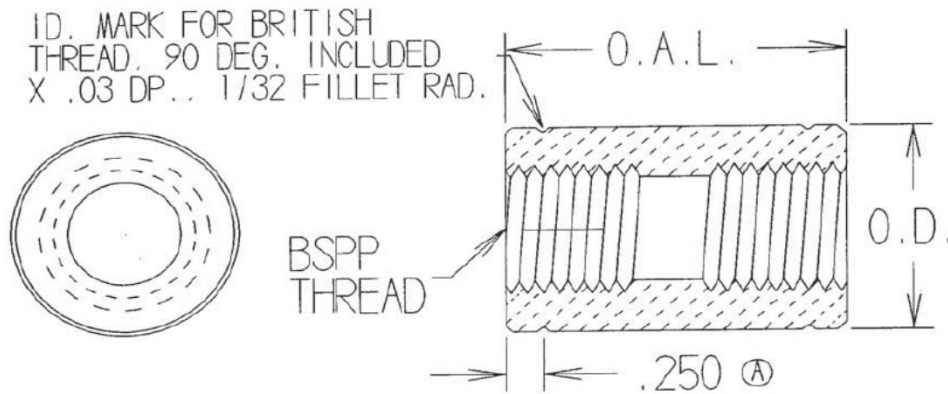


PART NO.	NPT THREAD	DIMENSION	
		A	C
ATC-18-04	1/4 NPT	1.00	.88
ATC-18-05	3/8 NPT	1.00	1.13
ATC-18-06	1/2 NPT	1.00	1.50
ATC-18-07	3/4 NPT	1.00	1.75
ATC-18-08	1 NPT	1.00	1.43
ATC-18-09	1-1/4 NPT	1.20	2.50
ATC-18-10	1-1/2 NPT	1.30	2.50
ATC-18-11	2 NPT	1.50	3.50
ATC-18-12	2-1/2 NPT	1.50	3.50

PART NO.	BSPT THREAD	DIMENSION	
		A	C
ATC-06-04	1/4 BSPT	0.575	.88
ATC-06-05	3/8 BSPT	0.75	1.25
ATC-06-06	1/2 BSPT	1.00	1.50
ATC-06-07	3/4 BSPT	1.00	1.75
ATC-06-08	1 BSPT	1.00	1.43
ATC-06-09	1-1/4 BSPT	1.12	2.00
ATC-06-10	1-1/2 BSPT		

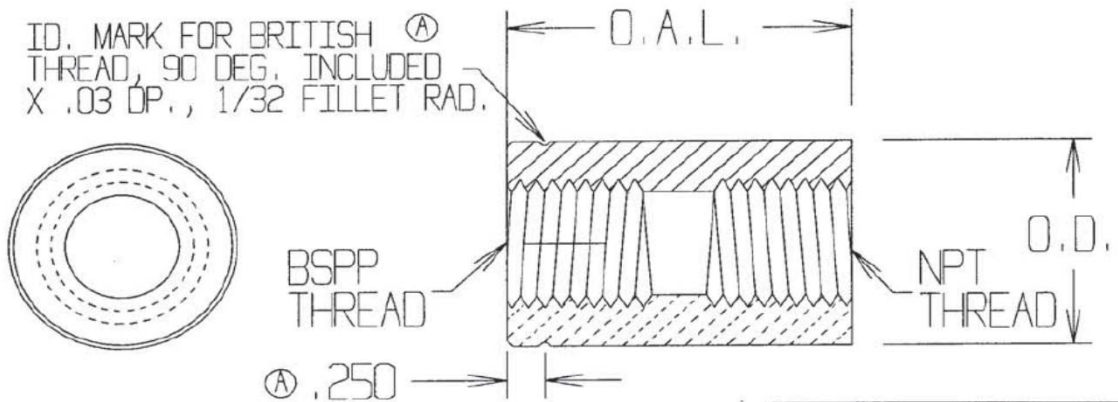
BRITISH STANDARD PIPE PARALELL
 SOCKET WELD FULL COUPLING (BSPP)


PART NO.	THREAD	O.D.	O.A.L.	PIPE SIZE	SOCKET BORE	SOCKET DEPTH
ATC-22-02	1/8					
ATC-22-03	1/4					
ATC-22-04	3/8					
ATC-22-05	1/2	1-1/2	1.75	1/2	0.855	0.50
ATC-22-06	3/4					
ATC-22-07	1	2	2.00	1	1.330	0.62
ATC-22-08	1-1/4	2-1/2	2.00	1-1/4	1.675	0.69
ATC-22-09	1-1/2	2-5/8	2.00	1-1/2	1.915	0.75
ATC-22-10	2					
ATC-22-11	2-1/2					

BRITISH STANDARD PIPE PARALLEL
 FULL COUPLING (BSPP X 2)


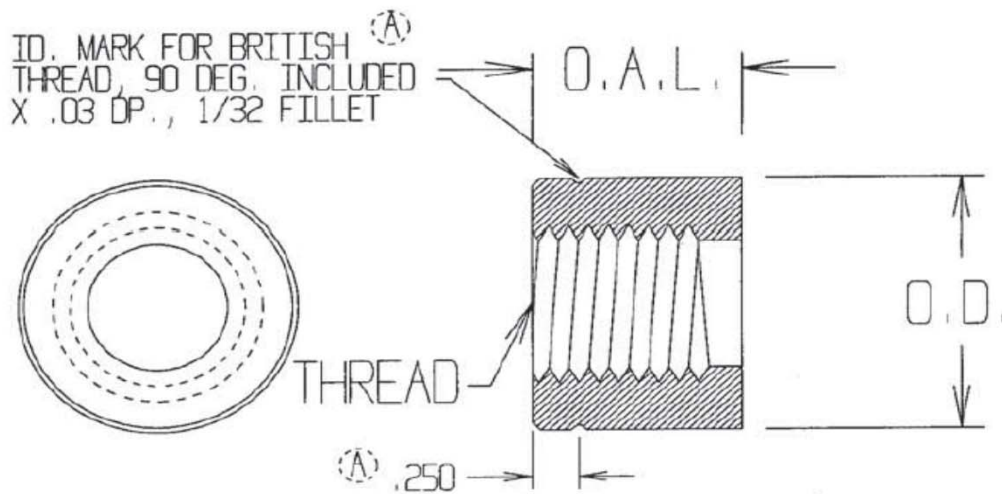
PART NO.	BSPP	O.D.	O.A.L.	THRU HOLE
ATC-31-02	1/8	0.75	0.87	0.339
ATC-31-03	1/4	1.00	1.00	0.453
ATC-31-04	3/8	1.25	1.50	0.589
ATC-31-05	1/2	1.50	1.75	0.734
ATC-31-06	3/4	1.75	2.00	0.953
ATC-31-07	1	2.00	2.37	1.192
ATC-31-08	1-1/4	2.50	2.50	1.533
ATC-31-09	1-1/2	2.62	2.50	1.765
ATC-31-10	2	3.50	2.75	2.230

BRITISH STANDARD PIPE PARALELL
 NPT FULL COUPLING (BSPPNPT)

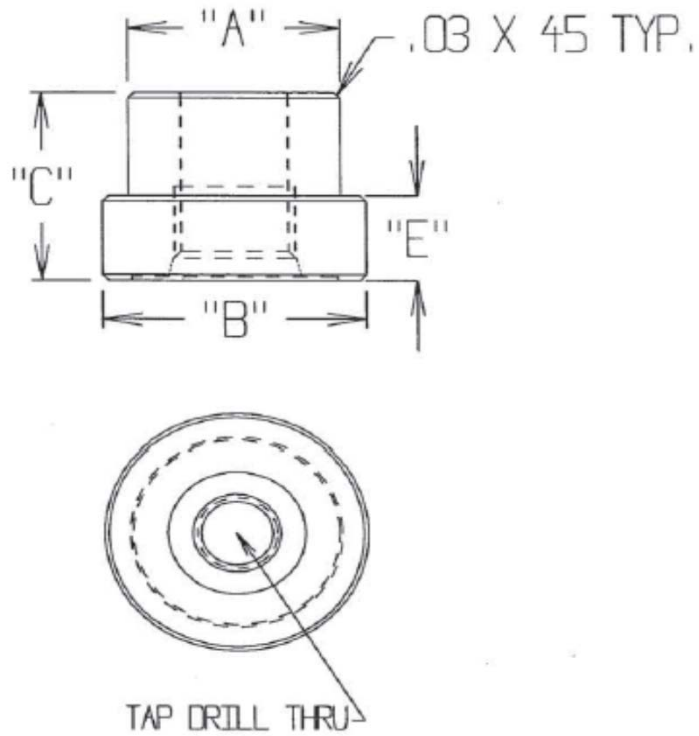


PART NO.	BSPP	O.D.	O.A.L.	PIPE SIZE	NPT
ATC-30-02	1/8	7/8	1		1/8
ATC-30-03	1/4	1	1-1/4		1/4
ATC-30-04	3/8	1	1-1/4		3/8
ATC-30-05	1/2	1-1/2	1-3/8	1/2	1/2
ATC-30-06	3/4	1-3/4	2		3/4
ATC-30-07	1	2	2	1	1
ATC-30-08	1-1/4	2-1/2	2	1-1/4	1-1/4
ATC-30-09	1-1/2	2-5/8	2	1-1/2	1-1/2
ATC-30-10	2				2
ATC-30-11	2-1/2				2-1/2

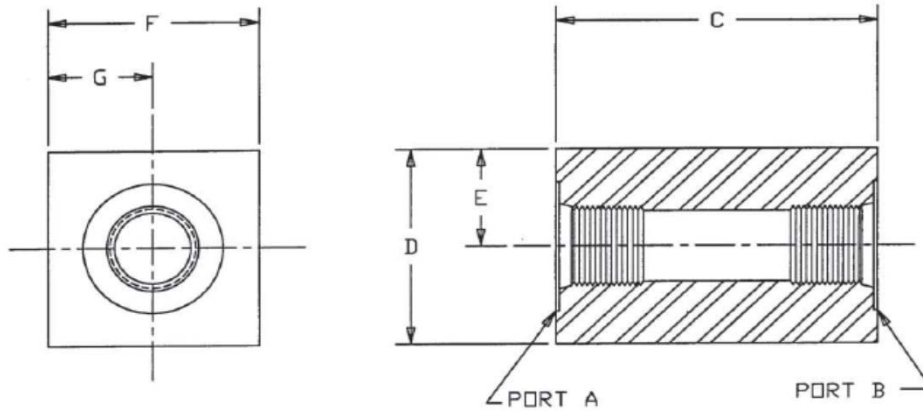
BRITISH STANDARD PIPE PARALELL HALF COUPLING (BSPP)



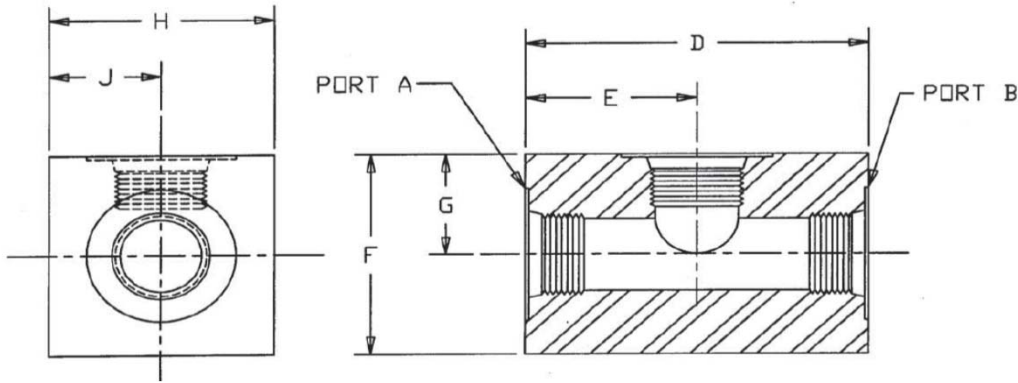
PART NO.	THREAD	O.D.	O.A.L.	THRU HOLE
ATC-40-02	1/8 - 28	0.75	1.00	0.339
ATC-40-03	1/4 - 19	1.00	1.00	0.453
ATC-40-04	3/8 - 19	1.00	1.00	0.589
ATC-40-05	1/2 - 14	1.25	1.00	0.734
ATC-40-06	3/4 - 14	1.75	1.00	0.953
ATC-40-07	1 - 11	2.00	1.00	1.192
ATC-40-08	1 1/4 - 11	2.50	1.20	1.533
ATC-40-09	1 1/2 - 11	2.62	1.30	1.765
ATC-40-10	2 - 11	3.50	1.50	2.230
ATC-40-11	2 1/2 - 11		1.50	2.844



PART NO.	A	B	C	PORT SIZE	E
ATC-S-6	1.00	1.25	1.50	#6 O-RING PORT	3/4
ATC-S-8	1.25	1.50	1.50	#8 O-RING PORT	3/4
ATC-S-12	1.75	2.00	1.50	#12 O-RING PORT	3/4
ATC-S-16	2.00	2.25	1.50	#16 O-RING PORT	3/4
ATC-S-20	2.25	2.75	1.75	#20 O-RING PORT	3/4
ATC-S-24	2.25	2.75	1.75	#24 O-RING PORT	3/4



PART NO.	S.A.E. STRIGHT THREAD		DIMENSIONS				SAE DASH NO.	
	A	B	C	D	E	F		G
ATC-25-24	2-1/2"-12	2-1/2"-12	4.12	3.50	1.75	3.50	1.75	SAE #32
ATC-25-23	2-1/2"-12	1-7/8"-12	4.12	3.50	1.75	3.50	1.75	
ATC-25-22	1-7/8"-12	1-7/8"-12	3.50	2.75	1.38	2.75	1.38	SAE #24
ATC-25-21	1-7/8"-13	1-5/8"-12	3.50	2.75	1.38	2.75	1.38	
ATC-25-20	1-5/8"-12	1-5/8"-12	3.25	2.50	1.25	2.50	1.25	SAE #20
ATC-25-19	1-5/8"-12	1-5/16"-12	3.25	2.50	1.25	2.50	1.25	
ATC-25-18	1-5/8"-12	1-3/16"-12	3.25	2.50	1.25	2.50	1.25	
ATC-25-17	1-5/8"-12	1-1/16"-12	3.25	2.50	1.25	2.50	1.25	
ATC-25-16	1-5/16"-12	1-5/16"-12	3.00	2.13	1.06	2.13	1.06	SAE #16
ATC-25-15	1-5/16"-12	1-3/16"-12	3.00	2.13	1.06	2.13	1.06	
ATC-25-14	1-5/16"-12	1-1/16"-12	3.00	2.13	1.06	2.13	1.06	
ATC-25-13	1-5/16"-12	1-7/8"-12	3.00	2.13	1.06	2.13	1.06	
ATC-25-12	1-3/16"-12	1-3/16"-12	2.88	2.00	1.00	2.00	1.00	SAE #14
ATC-25-11	1-3/16"-12	1-1/16"-12	2.88	2.00	1.00	2.00	1.00	
ATC-25-10	1-3/16"-12	7/8"-14	2.88	2.00	1.00	2.00	1.00	
ATC-25-09	1-1/16"-12	1-1/16"-12	2.68	1.75	.88	1.75	.88	
ATC-25-08	1-1/16"-12	7/8"-14	2.68	1.75	.88	1.75	.88	
ATC-25-07	1-1/16"-12	3/4"-16	2.68	1.75	.88	1.75	.88	
ATC-25-06	7/8" - 14	7/8"-14	2.31	1.50	.75	1.50	.75	SAE #10
ATC-25-05	7/8" - 14	3/4"-16	2.31	1.50	.75	1.50	.75	
ATC-25-04	3/4" - 16	3/4"-16	2.00	1.25	.63	1.25	.63	SAE #8
ATC-25-03	3/4" - 16	9/16"-18	2.00	1.25	.63	1.25	.63	
ATC-25-02	9/16" - 18	9/16"-18	1.68	1.13	.56	1.13	.56	SAE #6



PART NO.	S.A.E. STRIGHT THREAD			DIMENSIONS						SAE DASH NO.
	A	B	C	D	E	F	G	G	G	
ATC-26-37	2-1/2"-12	2-1/2"-12	2-1/2"-12	4.13	2.06	3.50	2.00	3.50	1.75	SAE #32
ATC-26-36	2-1/2"-12	2-1/2"-12	1-7/8"-12	4.13	2.06	3.50	2.00	3.50	1.75	SAE #32
ATC-26-35	2-1/2"-12	1-7/8"-12	2-1/2"-12	4.13	2.06	3.50	2.00	3.50	1.75	SAE #32
ATC-26-34	2-1/2"-12	1-7/8"-12	1-7/8"-12	4.13	2.06	3.50	2.00	3.50	1.75	SAE #24
ATC-26-33	1-7/8"-12	1-7/8"-12	2-1/2"-12	4.13	2.06	3.50	2.00	3.50	1.75	SAE #24
ATC-26-32	1-7/8"-12	1-7/8"-12	1-7/8"-12	4.13	2.06	3.50	2.00	3.50	1.75	SAE #24
ATC-26-31	1-7/8"-12	1-7/8"-12	1-5/8"-12	4.13	2.06	3.50	2.00	3.50	1.75	SAE #24
ATC-26-30	1-7/8"-12	1-5/8"-12	1-7/8"-12	4.13	2.06	3.50	2.00	3.50	1.75	SAE #24
ATC-26-29	1-7/8"-12	1-5/8"-12	1-5/8"-12	4.13	2.06	3.50	2.00	3.50	1.75	SAE #20
ATC-26-28	1-5/8"-12	1-5/8"-12	1-7/8"-12	3.50	1.75	2.75	1.63	2.75	1.38	SAE #20
ATC-26-27	1-5/8"-12	1-5/8"-12	1-5/8"-12	3.50	1.75	2.75	1.63	2.75	1.38	SAE #20
ATC-26-26	1-5/8"-12	1-5/8"-12	1-5/16"-12	3.50	1.75	2.75	1.63	2.75	1.38	SAE #20
ATC-26-25	1-5/8"-12	1-5/16"-12	1-5/8"-12	3.50	1.75	2.75	1.63	2.75	1.38	SAE #20
ATC-26-24	1-5/8"-12	1-5/16"-12	1-5/16"-12	3.50	1.75	2.75	1.63	2.75	1.38	SAE #16
ATC-26-23	1-5/16"-12	1-5/16"-12	1-5/8"-12	3.25	1.63	2.50	1.50	2.50	1.25	SAE #16
ATC-26-22	1-5/16"-12	1-5/16"-12	1-5/16"-12	3.25	1.63	2.50	1.50	2.50	1.25	SAE #16
ATC-26-21	1-5/16"-12	1-5/16"-12	1-1/16"-12	3.25	1.63	2.50	1.50	2.50	1.25	SAE #16
ATC-26-20	1-5/16"-12	1-1/16"-12	1-5/16"-12	3.25	1.63	2.50	1.50	2.50	1.25	SAE #16
ATC-26-19	1-5/16"-12	1-1/16"-12	1-1/16"-12	3.25	1.63	2.50	1.50	2.50	1.25	SAE #12
ATC-26-18	1-1/16"-12	1-1/16"-12	1-5/16"-12	3.00	1.50	2.13	1.31	2.13	1.06	SAE #12
ATC-26-17	1-1/16"-12	1-1/16"-12	1-1/16"-12	3.00	1.50	2.13	1.31	2.13	1.06	SAE #12
ATC-26-16	1-1/16"-12	1-1/16"-12	7/8"-14	3.00	1.50	2.13	1.31	2.13	1.06	SAE #12
ATC-26-15	1-1/16"-12	7/8"-14	1-1/16"-12	3.00	1.50	2.13	1.31	2.13	1.06	SAE #12
ATC-26-14	1-1/16"-12	7/8"-14	7/8"-14	3.00	1.50	2.13	1.31	2.13	1.06	SAE #12
ATC-26-13	7/8"-14	1-1/16"-12	7/8"-14	2.88	1.44	2.00	1.31	2.13	1.06	SAE #10
ATC-26-12	7/8"-14	7/8"-14	7/8"-14	2.88	1.44	2.00	1.31	2.00	1.00	SAE #10
ATC-26-11	7/8"-14	7/8"-14	3/4"-16	2.88	1.44	2.00	1.31	2.00	1.00	SAE #10
ATC-26-10	7/8"-14	3/4"-16	7/8"-14	2.88	1.44	2.00	1.31	2.00	1.00	SAE #10
ATC-26-09	7/8"-14	3/4"-16	3/4"-16	2.88	1.44	2.00	1.31	2.00	1.00	SAE #8
ATC-26-08	3/4"-16	3/4"-16	7/8"-14	2.63	1.31	1.75	1.13	1.75	.88	SAE #8
ATC-26-07	3/4"-16	3/4"-16	3/4"-16	2.63	1.31	1.75	1.13	1.75	.88	SAE #8
ATC-26-06	3/4"-16	3/4"-16	9/16"-18	2.63	1.31	1.75	1.13	1.75	.88	SAE #8
ATC-26-05	3/4"-16	9/16"-18	3/4"-16	2.63	1.31	1.75	1.13	1.75	.88	SAE #8
ATC-26-04	3/4"-16	9/16"-18	9/16"-18	2.63	1.31	1.75	1.13	1.75	.88	SAE #6
ATC-26-03	9/16"-18	9/16"-18	7/8"-14	2.63	1.31	1.75	1.13	1.75	.88	SAE #6
ATC-26-02	9/16"-18	9/16"-18	9/16"-18	2.63	1.31	1.75	1.13	1.75	.88	SAE #6